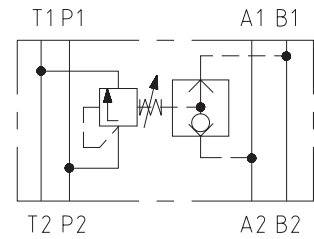


- Sandwich plate design for use in vertical stacking assemblies
- With integrated logic valve
- Pressure difference adjustable from 5 - 40 bar
- Installation dimensions to ISO 4401 CETOP-RP 121H, ISO 4401:1994 and DIN 24 340-A6



## Functional Description

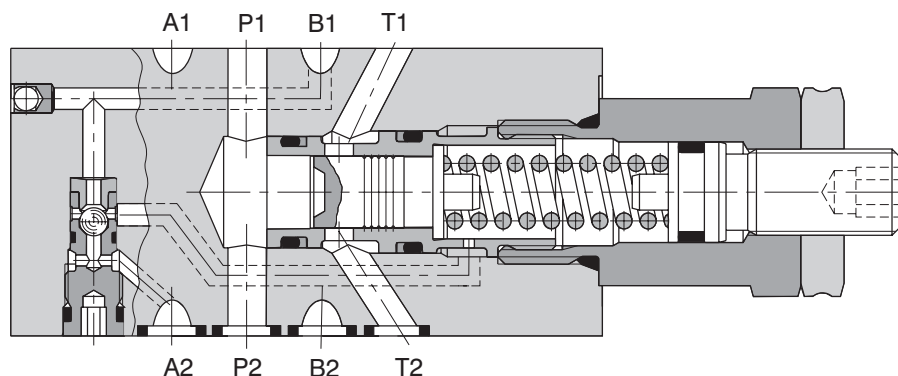
The valves TV2-043/M and TV2-063/M are designed as a sandwich plate of size 04 and 06. They consist of a body, a logic valve and a pressure compensator with control spool.

The ports A and B are always connected through the logic valve seat with the spring side of spool. The higher pressure pushes the ball onto the seat that is affected by the higher pressure. This always causes the channel with the higher pressure to be connected with the control spool spring room.

The required pressure difference between port P and the spring room is adjusted. When the pressure difference

between P and the spring room exceeds the value set, the control spool shifts, causing the part of pressure fluid to pass from P to T until the desired pressure difference has been restored.

Usually, this pressure compensator is used in connection with a proportional directional valve. In this case, each value of the control signal a particular constant flow rate can be assigned, this being independent of load.



# Ordering Code

TV2 -  3/M

Pressure compensator

without designation  
**V**

**Seals**  
NBR  
FPM (Viton)

**Nominal size**  
size 04 **04**  
size 06 **06**

**A**  
**B**  
**C**

**Model**  
in channel A  
in channel B  
in channels A and B

3-Way pressure compensator

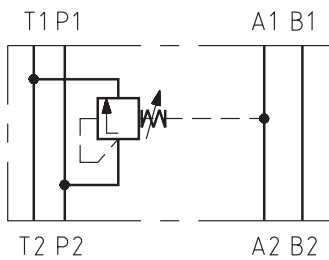
**Sandwich plate design**

## Technical Data

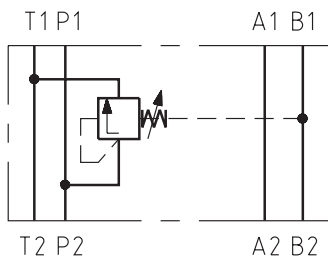
Nominal size	mm	04	06
Maximum flow	L/min	20	40
Max. operating pressure	bar	320	
Pressure drop on valve $\Delta p$	bar	5 - 40	
Hydraulic fluid	Hydraulic oils of power classes (HL, HLP) to DIN 51524		
Maximum degree of fluid contamination	Class 21/18/15 to ISO 4406 (1999)		
Weight (Model A,B,C)	kg	0.6	1.00
Mounting position	optional		

## Functional Symbols

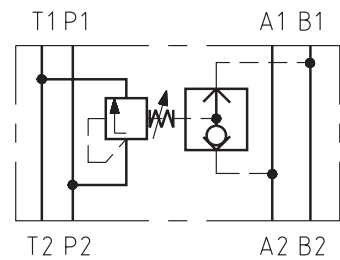
**Model A**



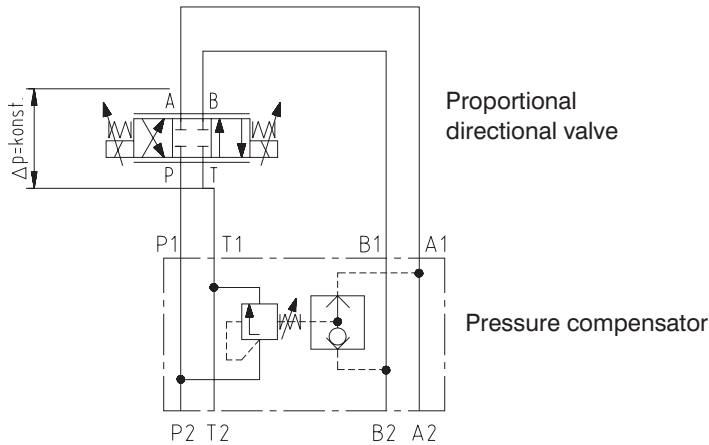
**Model B**



**Model C**



# Typical applications

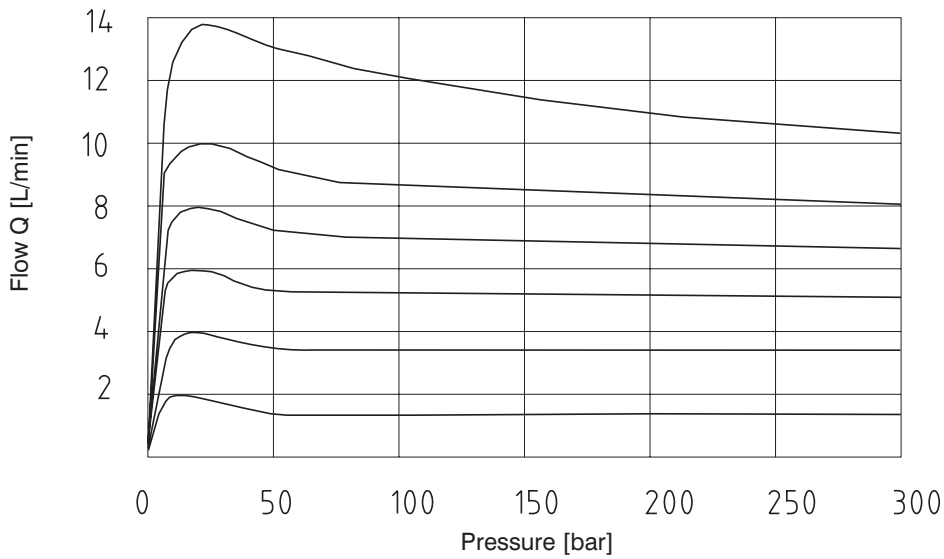


## Characteristics

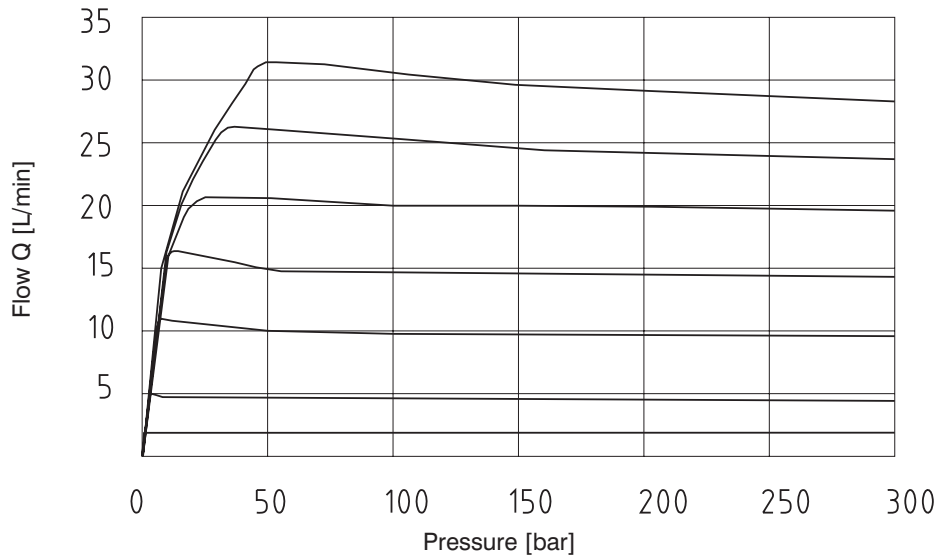
Measured at  $v = 35\text{mm}^2/\text{s}$  and  $t = 40\text{ }^\circ\text{C}$

The characteristic of the pressure compensator corresponds with the flow rate of a PRM2-043Z11/12 and PRM2-063Z11/30 proportional directional valve. By increasing the flow resistance due to a flow rate increase, also the outside pressure difference has to be increased, in order to ensure the correct control function.

### Tv2-043/M



### TV2-063/M

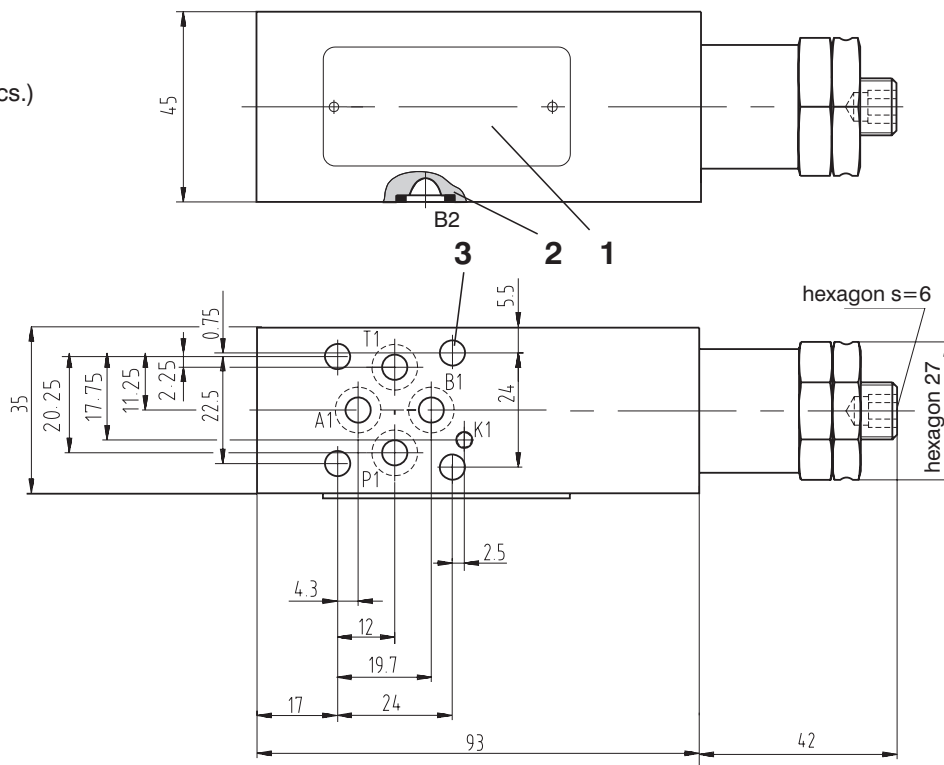


# Valve Dimensions

Dimensions in millimetres

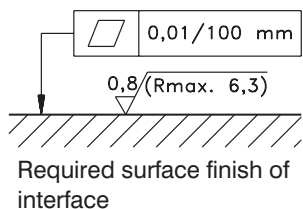
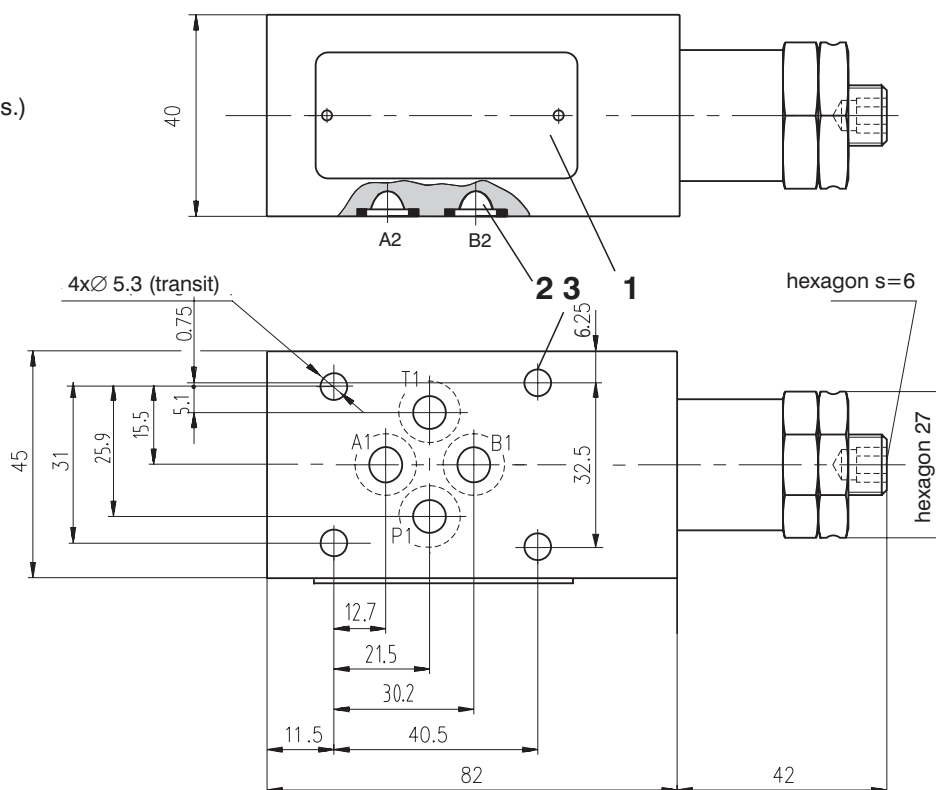
## TV2-043/M

- 1 Name plate
- 2 Square ring 7.65 x 1.68 (4 pcs.)
- 3 4 mounting holes



## TV2-063/M

- 1 Name plate
- 2 Square ring 9.25 x 1.68 (4 pcs.)
- 3 4 mounting holes



## Caution!

- The packing foil is recyclable.
- The technical information regarding the product presented in this catalogue is for descriptive purposes only. It should not be construed in any case as a guaranteed representation of the product properties in the sense of the law.

ARGO-HYTOS a. s. CZ - 543 15 Vrchlabí  
 Tel.: +420-499-403111, Fax: +420-499-403421  
 E-mail: sales.cz@argo-hytos.com  
 www.argo-hytos.com