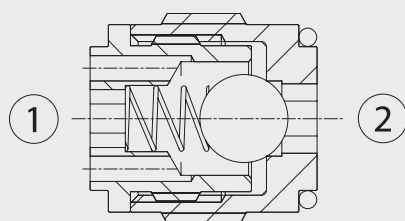


# VUI Valvole unidirezionali a sfera

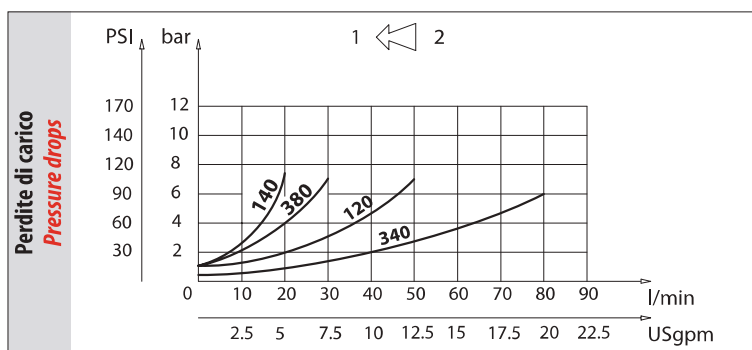
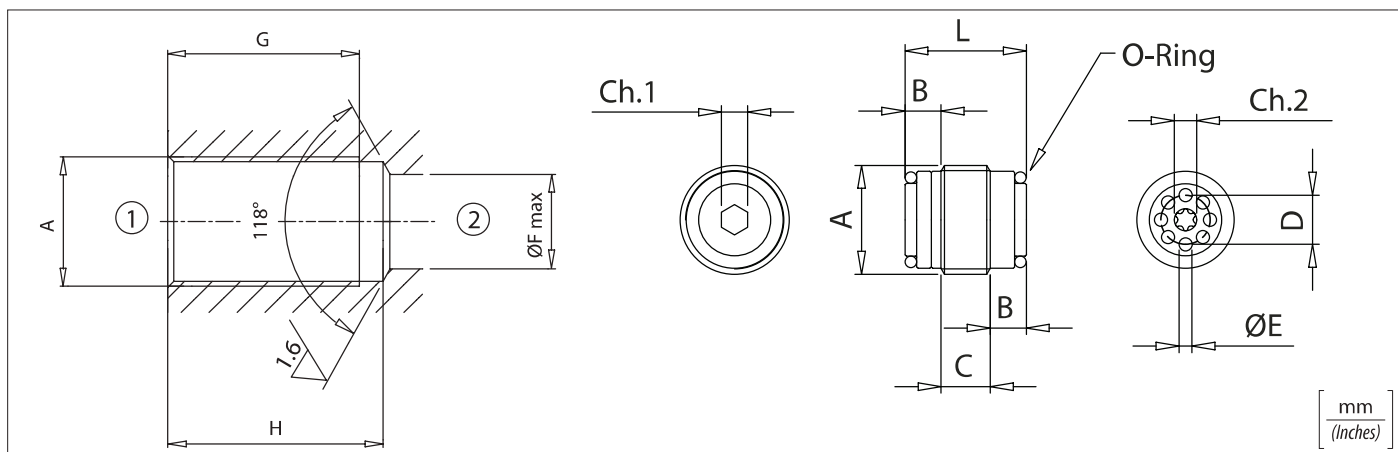
## Ball check valves



### Dati tecnici

#### Technical data

Olio idraulico Mineral oil	ISO 6743/4 DIN 51524
Viscosità fluido Fluid viscosity	10-500 mm <sup>2</sup> /s 45 to 2000 ssu (6 to 420 cSt)
Classe di contaminazione max con filtro Max contamination index with filter	ISO 4406:1999 Classe 19/17/14
Temperatura del fluido Fluid temperature	-20°C +80°C -4°F + 176°F
Temperatura ambiente Ambient temperature	-20°C +50°C -4°F + 122°F
È indispensabile l'utilizzo di un filtro (filtrazione consigliata 15 micron) per proteggere la valvola It is necessary a filter use to protect the valve (advised filtration 15 micron)	
Trafilamento Leakage	0 - 0,25 cm <sup>3</sup> /min (0-0,015 in <sup>3</sup> )
Pressione d'apertura Cracking pressure	0,5 bar (7 PSI)



Codice ordinazione / Ordering code	
<b>VUI - X</b>	
<b>X</b>	Dimensione / Size
140	BSPP 1/4
380	BSPP 3/8
120	BSPP 1/2
340	BSPP 3/4

### Caratteristiche tecniche / Technical performances

Codice Code	A	Portata max Max Flow I/min-USgpm	Pressione Max Max pressure bar/PSI	B	C	D	E	F	G	H	L	Ch. 1	Ch. 2	Coppia di serraggio Tightening torque Nm / lbt ft	O-Ring	Peso appross. Approx weight Kg / lb
VUI 140	BSPP 1/4	20 (5)	350 (5000)	5,5 (0.28)	6 (0.24)	6 (0.24)	1,3 (0.05)	7 (0.28)	28 (1.10)	31 (1.22)	17 (0.67)	3 (0.11)	Torx T15	6 (53)	9 x 1	0,01 (0.022)
VUI 380	BSPP 3/8	30 (8)			7,5 (0.30)	7,5 (0.30)	2 (0.08)	9 (0.35)	31 (1.22)	34 (1.34)	18,5 (0.73)	4 (0.15)	Torx T15		10,8 x 1,78	0,018 (0.040)
VUI 120	BSPP 1/2	50 (13)		7 (0.22)	8,5 (0.34)	10 (0.39)	2,5 (0.10)	12 (0.47)	35 (1.38)	38 (1.50)	22,5 (0.88)	6 (0.23)	5 (0.19)	10 (88)	14 x 1,78	0,033 (0.073)
VUI 340	BSPP 3/4	80 (21)		7,5 (0.30)	13,5 (0.53)	14 (0.55)	3,25 (0.13)	16 (0.63)	41 (1.61)	45 (1.77)	28,5 (1.12)	8 (0.31)	8 (0.31)	20 (177)	18,7 x 2,62	0,07 (0.16)