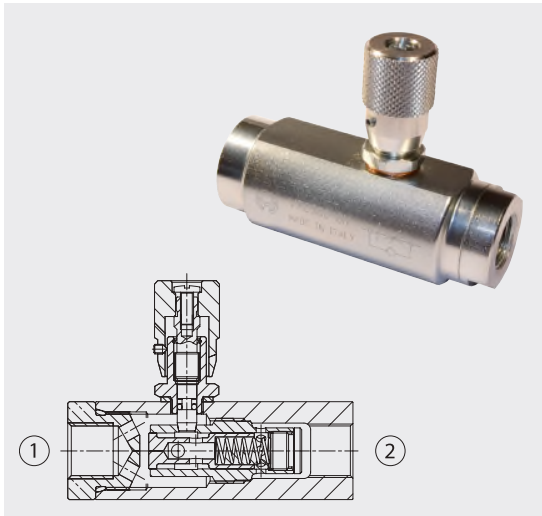




VRC Valvole per controllo flusso compensate

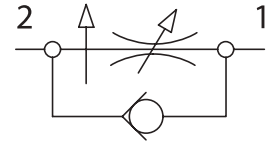
Compensated flow control valves



Dati tecnici

Technical data

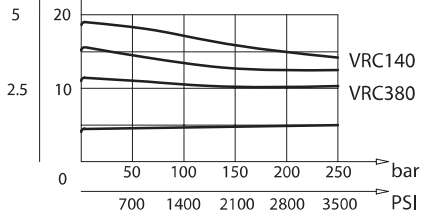
Olio idraulico <i>Mineral oil</i>	ISO 6743/4 <i>DIN 51524</i>	
Viscosità fluido <i>Fluid viscosity</i>	10-500 mm ² /s 45 to 2000 ssu (6 to 420 cSt)	
Classe di contaminazione max con filtro <i>Max contamination index with filter</i>	ISO 4406:1999 Classe 19/17/14	
Temperatura del fluido <i>Fluid temperature</i>	-20°C -4°F	+80°C +176°F
Temperatura ambiente <i>Ambient temperature</i>	-20°C -4°F	+50°C +122°F



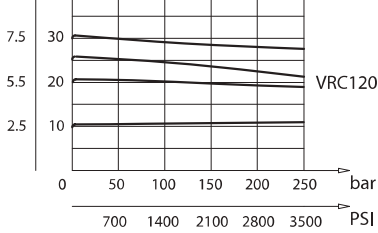
È indispensabile l'utilizzo di un filtro (filtrazione consigliata 15 micron) per proteggere la valvola
It is necessary a filter use to protect the valve (advised filtration 15 micron)

Perdite di carico *Pressure drops*

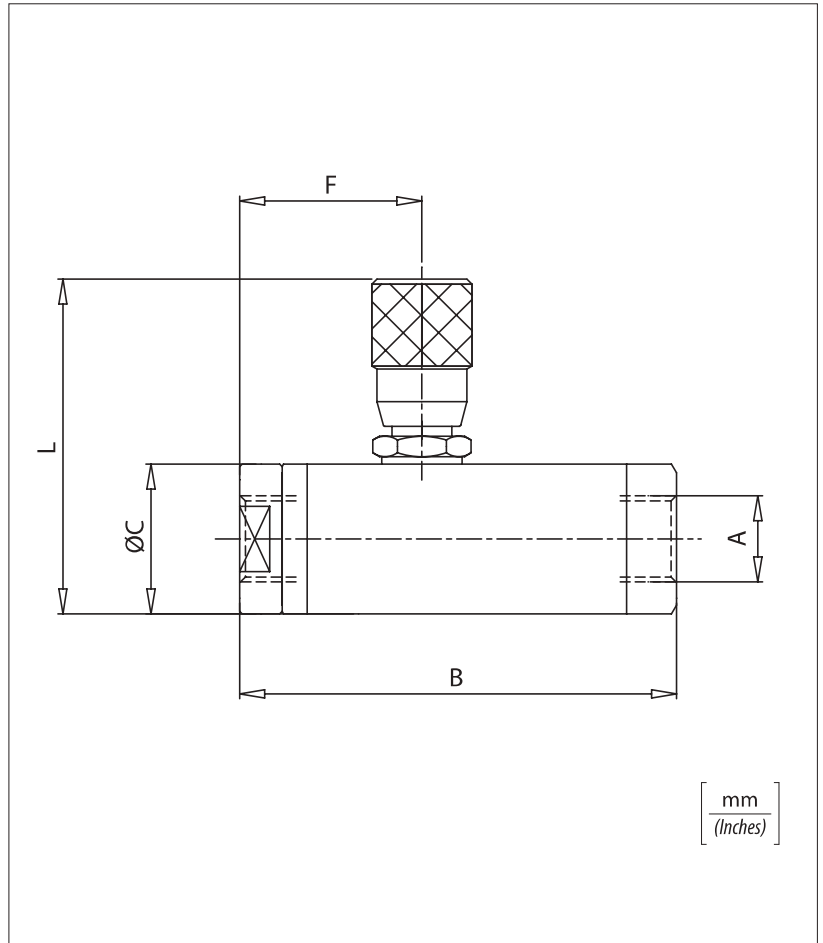
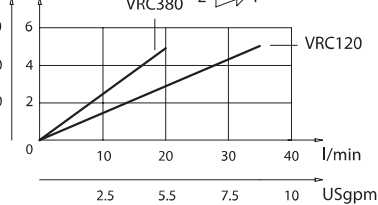
USgpm I/min



USgpm I/min



PSI bar



Caratteristiche tecniche / *Technical performances*

Codice <i>Code</i>	A	Portata max <i>Max Flow</i> I/min - USgpm	Pressione Max <i>Max pressure</i> bar / PSI	B	C	F	L	Peso approssimativo / Kg <i>Approx weight / lb</i>
VRC140	BSPP 1/4	10 (2.5)	250 (3600)	88 (3.46)	27 (1.06)	51 (2)	52 (2.05)	0,49 (1.08)
VRC380	BSPP 3/8	18 (4.7)		0,48 (1.05)				
VRC120	BSPP 1/2	33 (8.7)		108 (4.25)	36 (1.42)	61 (2.40)	57 (2.25)	0,72 (1.58)

Codice ordinazione / *Ordering code*

VRC - X

X

Dimensione / *Size*

140	BSPP 1/4
380	BSPP 3/8
120	BSPP 1/2