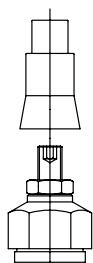




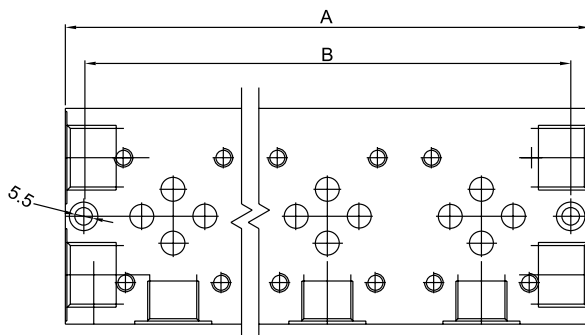
Le basi multiple monoblocco BM consentono il montaggio di due o più elettrovalvole CETP3, vengono fornite con o senza valvola di massima pressione.

*BM enbloc multiple manifolds allow mounting of two or more CETOP3 solenoid valves, they are supplied with or without relief valve.*

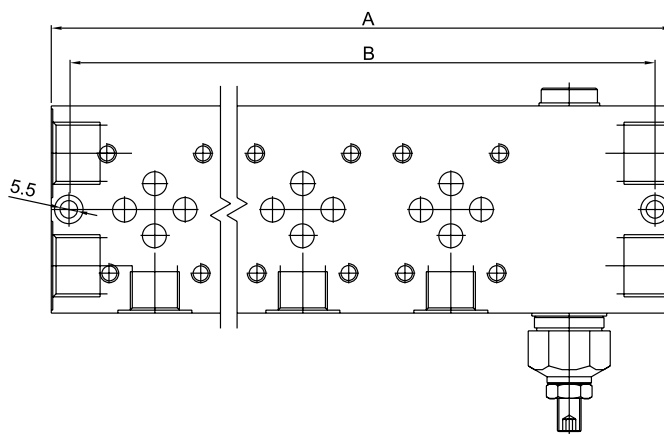
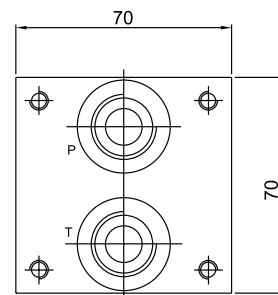
Cappuccio in plastica  
Safety cap



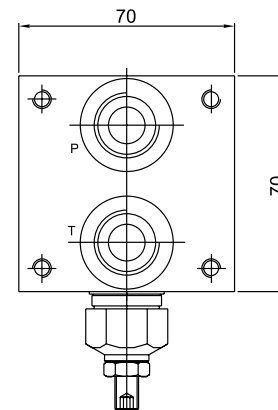
Il cappuccio in plastica garantisce contro la manomissione della valvola. Nel caso in cui si voglia modificare la taratura il cappuccio si rompe. *The plastic cap does not allow to modify the valve setting, otherwise it breaks.*



Base senza valvola di massima pressione  
Manifold without relief valve

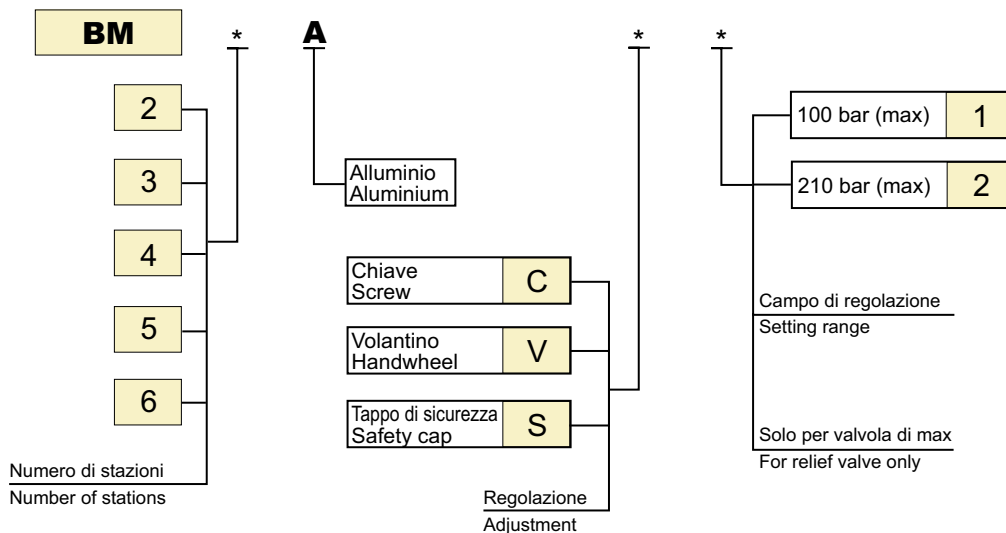


Base con valvola di massima pressione  
Manifold with relief valve



A-B BSPP 3/8 P-T BSPP 1/2

Codice di ordinazione  
Ordering code



N° staz.	A (mm)	B (mm)
2	120	108
3	170	158
4	220	208
5	270	258
6	320	308