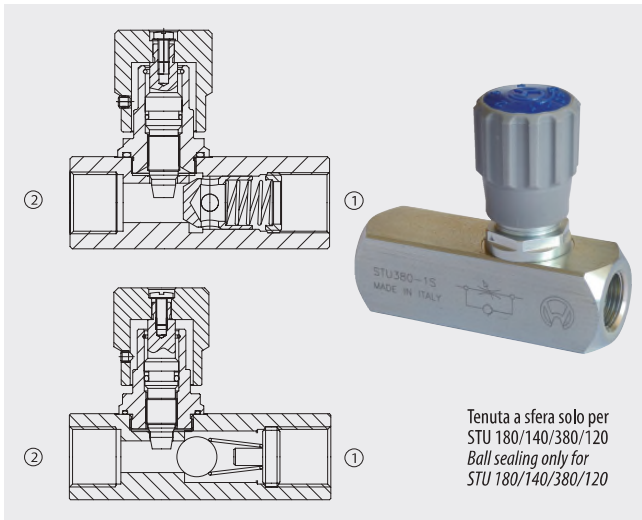


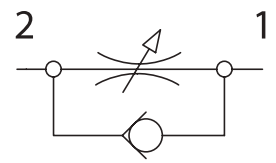


# STU-BSP Valvole di controllo flusso unidirezionali

## Unidirectional flow control valves



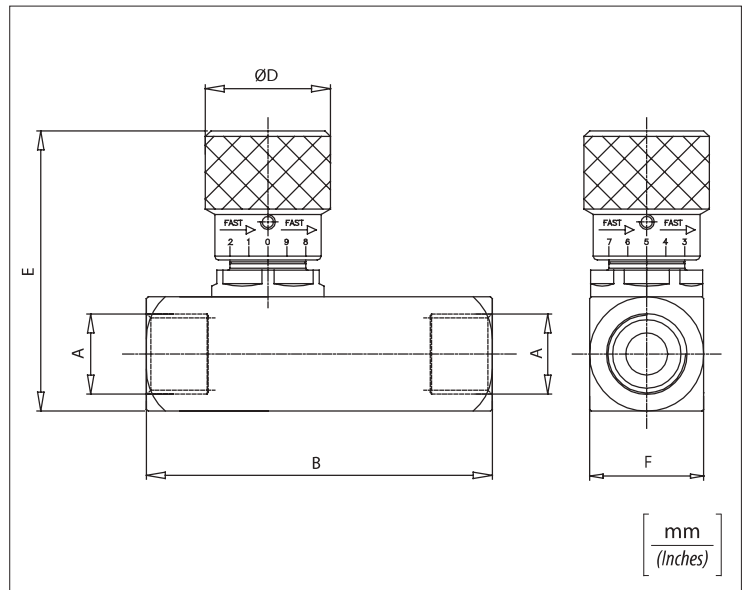
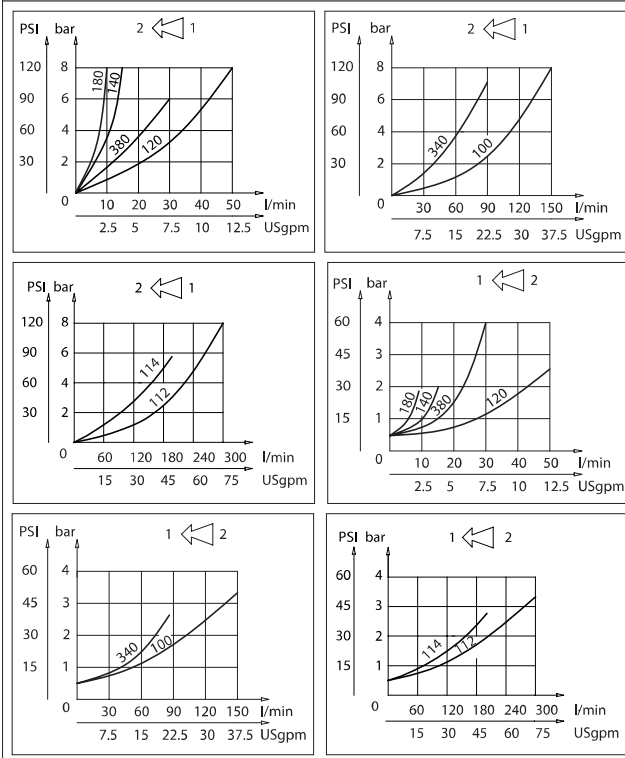
Dati tecnici	
Technical data	
Olío idraulico Mineral oil	ISO 6743/4 DIN 51524
Viscosità fluido Fluid viscosity	10-500 mm <sup>2</sup> /s 45 to 2000 ssu (6 to 420 cSt)
Classe di contaminazione max con filtro Max contamination index with filter	ISO 4406:1999 Classe 19/17/14
Temperatura del fluido Fluid temperature	-20°C +80°C -4°F +176°F
Temperatura ambiente Ambient temperature	-20°C +50°C -4°F +122°F



È indispensabile l'utilizzo di un filtro (filtrazione consigliata 15 micron) per proteggere la valvola

It is necessary a filter use to protect the valve (advised filtration 15 micron)

### Perdite di carico Pressure drops



### Caratteristiche tecniche / Technical performances

Code Codice	A	Portata max Max Flow l/min - USgpm	Pressione Max Max pressure bar / PSI	B	D	E	F	Peso approssimativo / Kg Approx weight / lb
STU 180	BSPP 1/8	10 (2.5)	400 (5800)	58 (2.28)	20 (0.79)	53 (2.08)	20 (0.79)	0,3 (0.7)
STU 140	BSPP 1/4	15 (4)		66 (2.60)	30 (1.18)	71,5 (2.81)	25 (0.98)	0,34 (0.75)
STU 380	BSPP 3/8	30 (8)		77 (3.03)				
STU 120	BSPP 1/2	50 (13)		91 (3.58)	33 (1.30)	72 (2.83)	30 (1.18)	0,60 (1.3)
STU 340	BSPP 3/4	80 (20)		112,5 (4.43)	42 (1.65)	94 (3.70)	40 (1.57)	1,33 (3)
STU 100	BSPP 1	150 (40)		141 (5.55)				
STU 114	BSPP 1-1/4	200 (50)	350 (5000)	155 (6.10)	53 (2.08)	121,5 (4.78)	55 (2.16)	3,1 (6.8)
STU 112	BSPP 1-1/4	300 (80)		168 (6.61)				

### Codice ordinazione / Ordering code

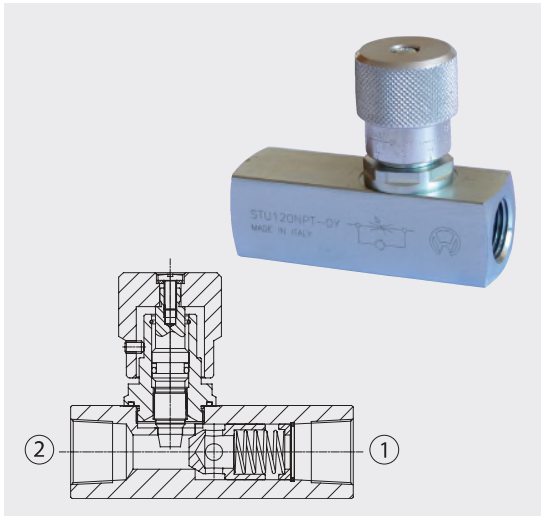
## STU - X

X	Dimensione / Size
180	BSPP 1/8
140	BSPP 1/4
380	BSPP 3/8
120	BSPP 1/2
340	BSPP 3/4
100	BSPP 1
114	BSPP 1-1/4
112	BSPP 1-1/2



# STU-NPTF Valvole di controllo flusso unidirezionali

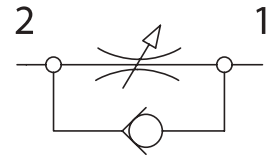
## Unidirectional flow control valves



### Dati tecnici

#### Technical data

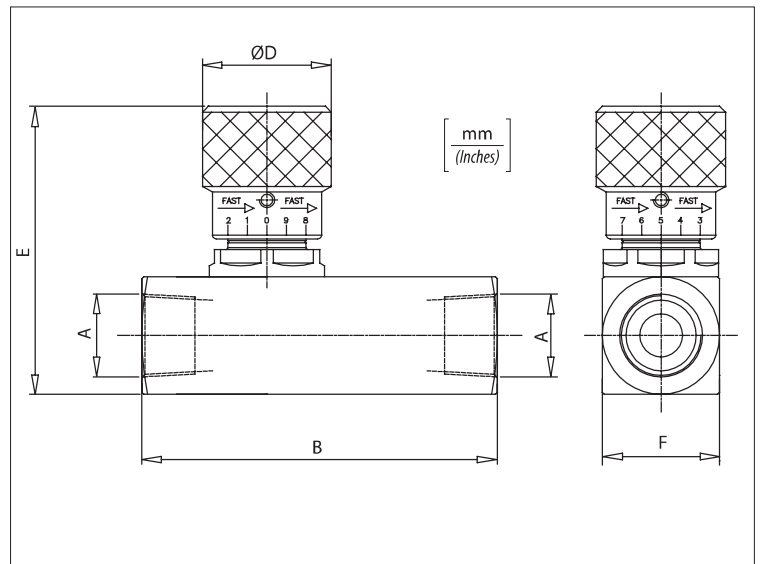
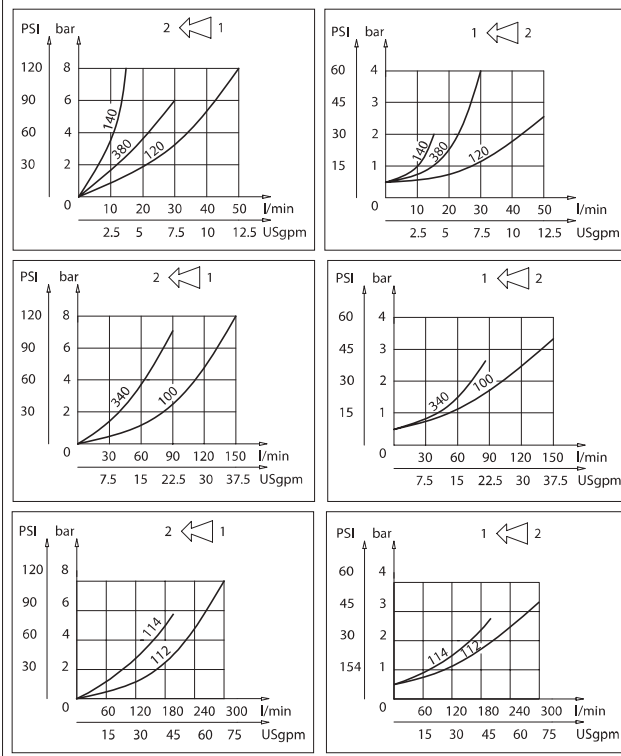
Olio idraulico Mineral oil	ISO 6743/4 DIN 51524	
Viscosità fluido Fluid viscosity	10-500 mm <sup>2</sup> /s 45 to 2000 ssu (6 to 420 cSt)	
Classe di contaminazione max con filtro Max contamination index with filter	ISO 4406:1999 Classe 19/17/14	
Temperatura del fluido Fluid temperature	-20°C -4°F	+80°C +176°F
Temperatura ambiente Ambient temperature	-20°C -4°F	+50°C +122°F



È indispensabile l'utilizzo di un filtro (filtrazione consigliata 15 micron) per proteggere la valvola

It is necessary a filter use to protect the valve (advised filtration 15 micron)

### Perdite di carico *Pressure drops*



### Caratteristiche tecniche / *Technical performances*

Codice Code	A	Portata max Max Flow l/min - USgpm	Pressione Max Max pressure bar / PSI	B	D	E	F	Peso approssimativo / Kg Approx weight / lb
STU180NPT	NPTF 1/8	10 (2.5)	400 (5800)	58 (2.28)	20 (0.79)	53 (2.08)	20 (0.79)	0,3 (0.7)
STU140NPT	NPTF 1/4	15 (4)		66 (2.60)	30 (1.18)	68 (2.68)	25 (0.98)	0,37 (0.75)
STU380NPT	NPTF 3/8	30 (8)		77 (3.03)				
STU120NPT	NPTF 1/2	50 (13)		91 (3.58)	33 (1.30)	72 (2.83)	30 (1.18)	0,60 (1.32)
STU340NPT	NPTF 3/4	80 (21)		112,5 (4.43)	42 (1.65)	94 (3.70)	40 (1.57)	1,40 (3.09)
STU100NPT	NPTF 1	150 (40)		141 (5.55)				
STU114NPT	NPTF 1-1/4	200 (50)	350 (5000)	155 (6.10)	53 (2.08)	121,5 (4.78)	55 (2.16)	3,06 (6.73)
STU112NPT	NPTF 1-1/2	300 (80)		168 (6.61)				

### Codice ordinazione / *Ordering code*

## STU - X - NPT

X

Dimensione / Size

180

NPTF 1/8

140

NPTF 1/4

380

NPTF 3/8

120

NPTF 1/2

340

NPTF 3/4

100

NPTF 1

114

NPTF 1-1/4

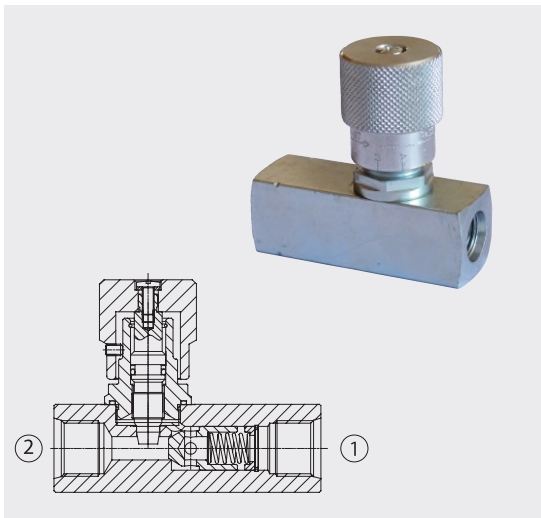
112

NPTF 1-1/2



# STU-SAE Valvole di controllo flusso unidirezionali

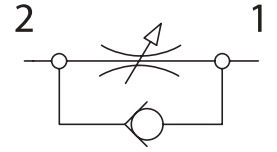
## Unidirectional flow control valves



### Dati tecnici

#### Technical data

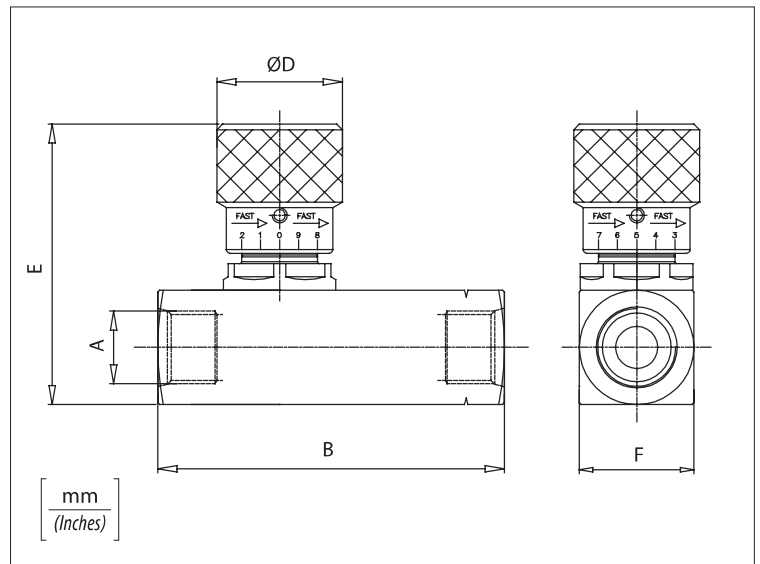
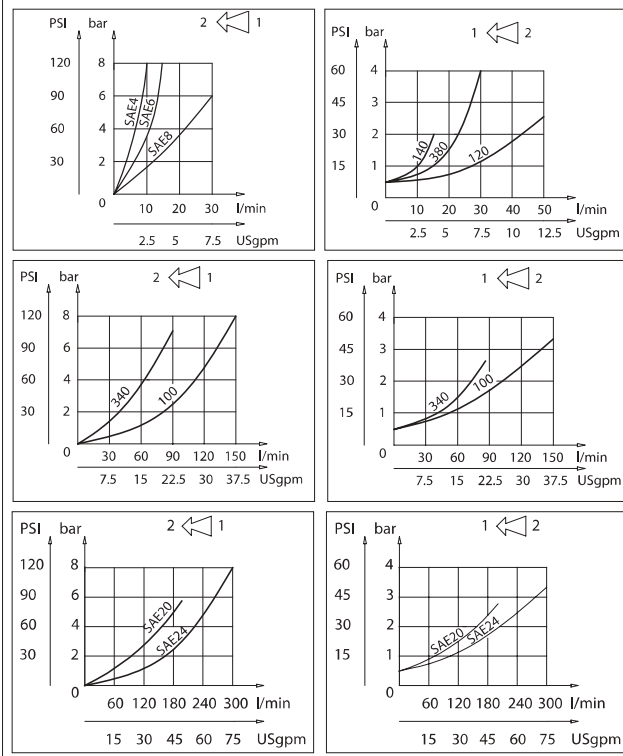
Olio idraulico Mineral oil	ISO 6743/4 DIN 51524	
Viscosità fluido Fluid viscosity	10-500 mm <sup>2</sup> /s 45 to 2000 ssu (6 to 420 cSt)	
Classe di contaminazione max con filtro Max contamination index with filter	ISO 4406:1999 Classe 19/17/14	
Temperatura del fluido Fluid temperature	-20°C -4°F	+80°C +176°F
Temperatura ambiente Ambient temperature	-20°C -4°F	+50°C +122°F



È indispensabile l'utilizzo di un filtro (filtrazione consigliata 15 micron) per proteggere la valvola

It is necessary a filter use to protect the valve (advised filtration 15 micron)

### Perdite di carico *Pressure drops*



### Caratteristiche tecniche / *Technical performances*

Codice Code	A	Portata max Max Flow l/min - USgpm	Pressione Max Max pressure bar / PSI	B	D	E	F	Peso approssimativo / Kg Approx weight / lb
STU4SAE	7/16 - 20UNF	15 (4)	400 (5800)	66 (2.60)	30 (1.18)	68 (2.68)	25 (0.98)	0,39 (0.85)
STU6SAE	9/16 - 18UNF	30 (8)		70,5 (2.78)				0,40 (0.88)
STU8SAE	3/4 - 16UNF	50 (13)		91 (3.58)	33 (1.30)	72 (2.83)	30 (1.18)	0,60 (1.32)
STU12SAE	1 - 1/16 - 12UN	80 (21)		112,5 (4.43)	42 (1.65)	94 (3.70)	40 (1.57)	1,28 (2.80)
STU16SAE	1 - 5/16 - 12UN	150 (40)		141 (5.55)				99 (3.90)
STU20SAE	1 - 5/8 - 12UN	200 (50)		155 (6.10)	53 (2.08)	121,5 (4.78)	55 (2.16)	3,06 (6.73)
STU24SAE	1 - 7/8 - 12UN	300 (80)	168 (6.61)	131,5 (5.17)				65 (2.55)

### Codice ordinazione / *Ordering code*

## STU - X - SAE

**X**

Dimensione / *Size*

4

7/16 - 20UNF

6

9/16 - 18UNF

8

3/4 - 16UNF

12

1 - 1/16 - 12UN

16

1 - 5/16 - 12UN

20

1 - 5/8 - 12UN

24

1 - 7/8 - 12UN