

Size 06

...3626 PSI (250 bar)

Replaces
HA 0006 2/2000

- For in-line mounting of hydraulic valves
- Parallel connection of ports P and T
- 1 ... 10 sections possible
- Installation dimensions to ISO 4401-03-02-0-94 and DIN 24 340-A6
- Mounting Accessories



Ordering Code

PD06 -AL

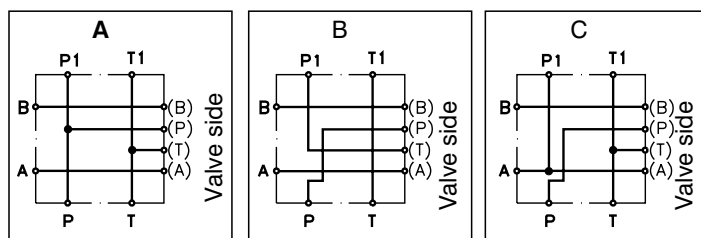
In-line connecting platte

Nominal size

Material - aluminium

Connection

Functional symbols



Number of section

| | |
|---|------------|
| 1 | 1 section |
| 2 | 2 sections |
| 3 | 3 sections |
| 4 | 4 sections |
| 5 | 5 sections |
| 6 | 6 sections |

Survey of Types

| Type | Ordering number | Weight |
|------------------|-----------------|----------------------|
| PD06A1-AL | 760-0031 | 1.572 lbs (0.713 kg) |
| PD06B1-AL | 760-0037 | 1.574 lbs (0.714 kg) |
| PD06C1-AL | 760-0038 | 1.568 lbs (0.711 kg) |
| PD06A2-AL | 760-0032 | 3.109 lbs (1.410 kg) |
| PD06A3-AL | 760-0033 | 4.652 lbs (2.110 kg) |
| PD06A4-AL | 760-0034 | 6.217 lbs (2.820 kg) |
| PD06A5-AL | 760-0035 | 7.771 lbs (3.525 kg) |
| PD06A6-AL | 760-0036 | 9.326 lbs (4.230 kg) |

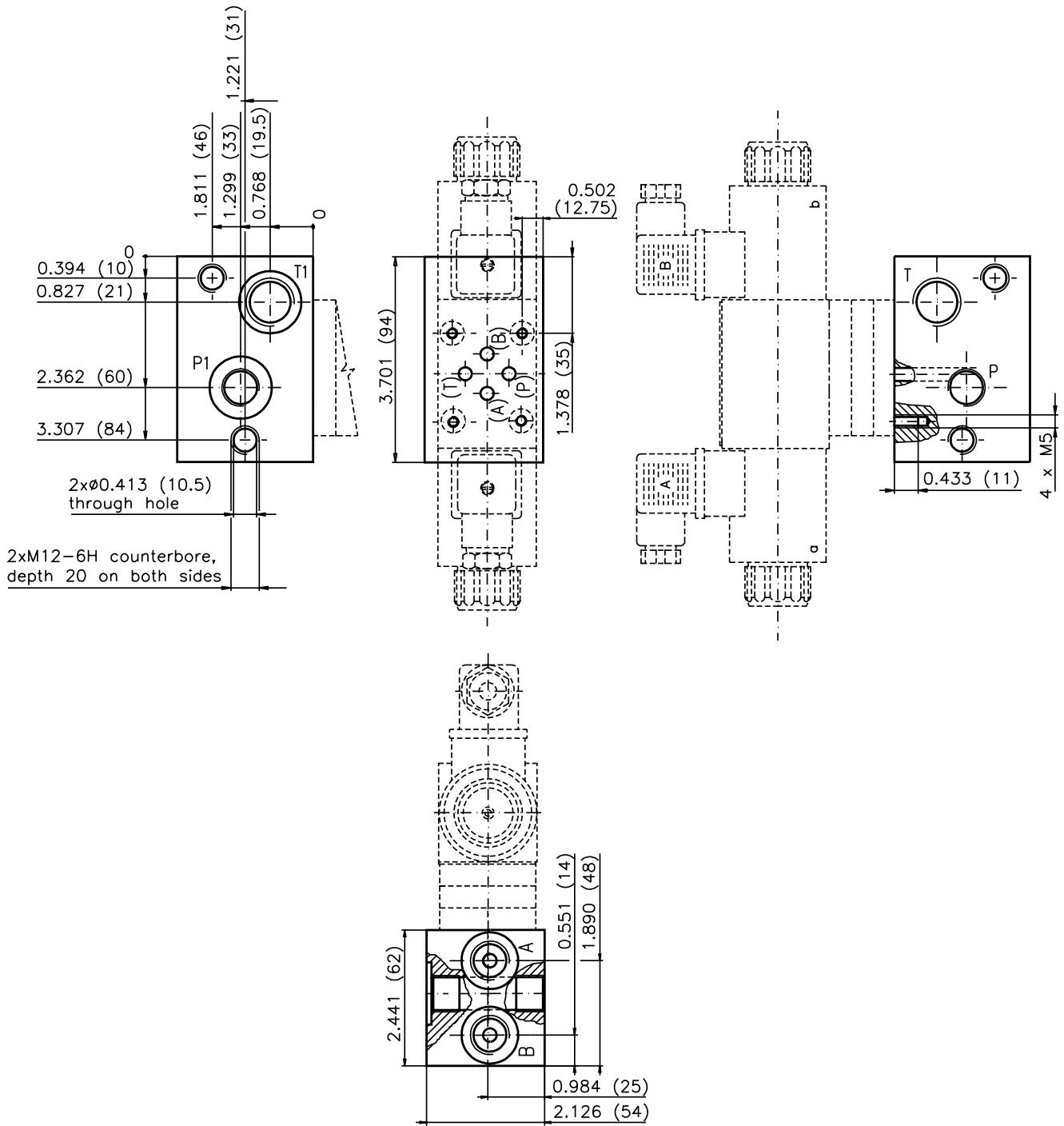
FOR PREFERRED TYPES SEE BOLD TYPING IN ORDERING CODE AND TABLE OF SURVEY OF TYPES

Valve Dimensions

Dimensions in inches and millimeters (in brackets)

Plates with 1 section

Plates with 1, 2, 3 and 4 sections enable combinations up to 10 sections



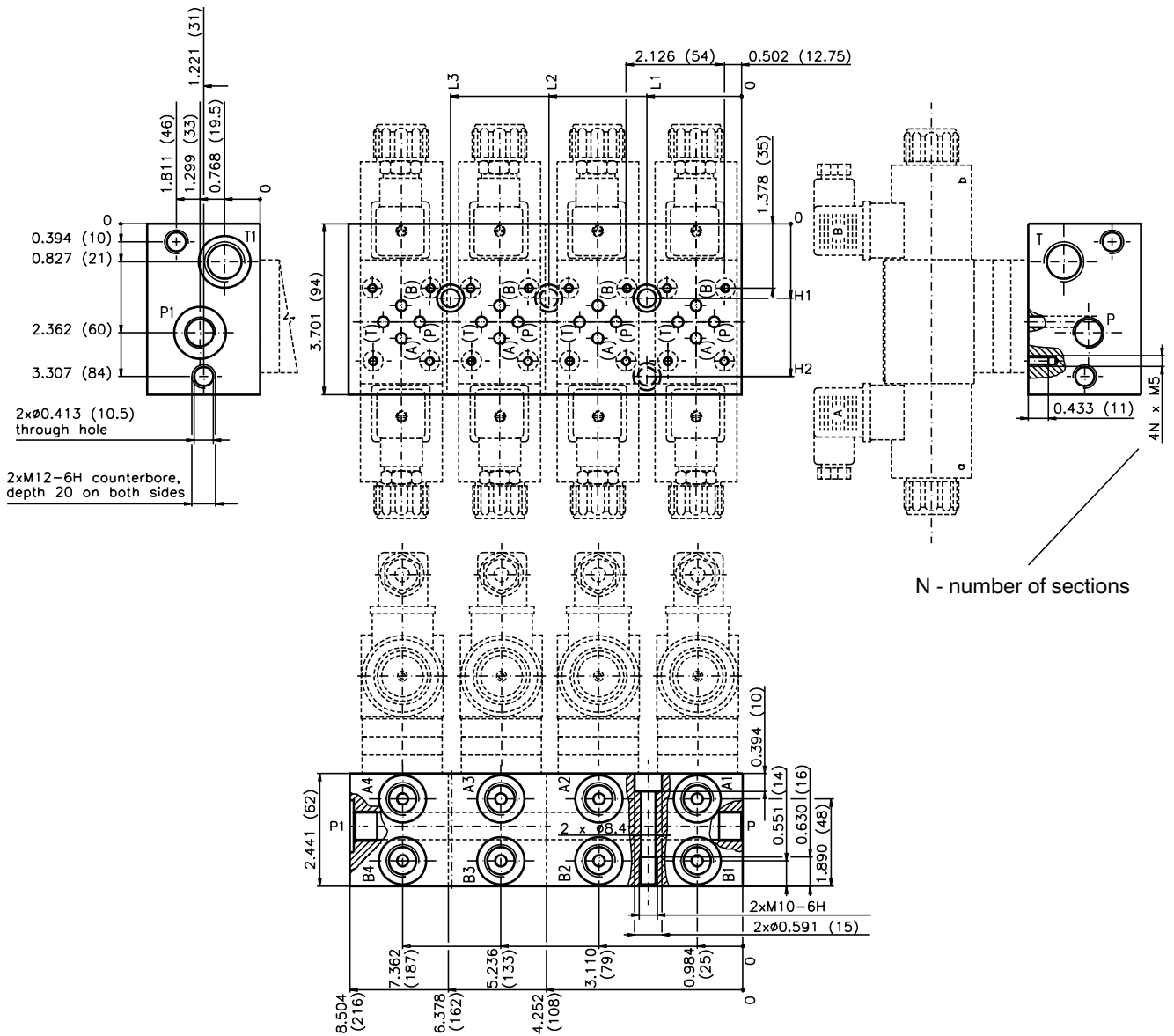
| Port | A, B | P | T | P1 | T1 |
|----------------------|-------------|------------|------------|-------------------------|-------------------------|
| Thread | G3/8 | G3/8 | G1/2 | G3/8 | G1/2 |
| Depth of thread | 0.512 (13) | 0.512 (13) | 0.670 (17) | 0.512 (13) | 0.670 (17) |
| Counterbore | Ø0.945 (24) | - | - | Ø1.118-0.008 (28.4-0.2) | Ø1.118-0.008 (28.4-0.2) |
| Depth of counterbore | 0.020 (0.5) | - | - | 0.083-0.004 (2.1-0.1) | 0.083-0.004 (2.1-0.1) |
| O-Ring [mm] | - | - | - | 23.4 x 2.62 | 23.4 x 2.62 |

Valve Dimensions

Dimensions in inches and millimeters (in brackets)

Plates with 2 ... 4 sections

Plates with 1, 2, 3 and 4 sections enable combinations up to 10 sections



| Number of sections | L1 | L2 | L3 | H1 | H2 |
|--------------------|------------|-------------|-------------|------------|------------|
| 2 | 2.047 (52) | - | - | 1.614 (41) | 3.307 (84) |
| 3 | 2.047 (52) | 4.173 (106) | - | 1.614 (41) | - |
| 4 | 2.047 (52) | - | 6.300 (160) | 1.614 (41) | - |

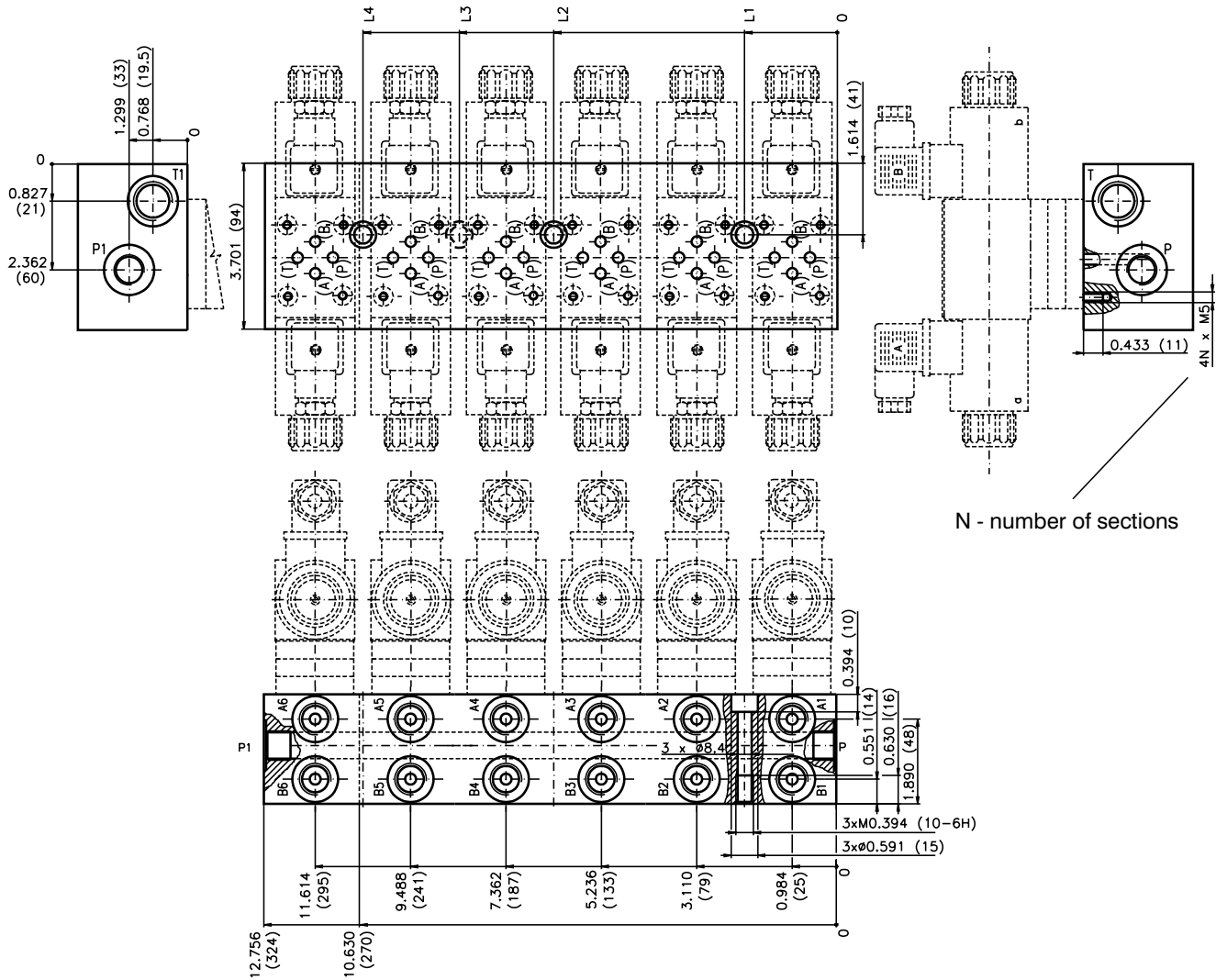
| Port | A1...A4, B1...B4 | P | P1 | T | T1 |
|----------------------|------------------|------------|-------------------------|------------|-------------------------|
| Thread | G3/8 | G3/8 | G3/8 | G1/2 | G1/2 |
| Depth of thread | 0.512 (13) | 0.512 (13) | 0.512 (13) | 0.670 (17) | 0.670 (17) |
| Counterbore | Ø0.945 (24) | - | Ø1.118-0.008 (28.4-0.2) | - | Ø1.118-0.008 (28.4-0.2) |
| Depth of counterbore | 0.020 (0.5) | - | 0.083-0.004 (2.1-0.1) | - | 0.083-0.004 (2.1-0.1) |
| O-Ring [mm] | - | - | 23.4 x 2.62 | - | 23.4 x 2.62 |

Valve Dimensions

Dimensions in inches and millimeters (in brackets)

Plates with 5 ... 6 sections

Plates with 5 and 6 do not enable any other combinations



N - number of sections

| Number of sections | L1 | L2 | L3 | L4 |
|--------------------|------------|-------------|-------------|--------------|
| 5 | 2.047 (52) | 6.300 (160) | 8.425 (214) | - |
| 6 | 2.047 (52) | 6.300 (160) | - | 10.551 (268) |

| Port | A1...A6, B1...B6 | P, P1 | T, T1 |
|----------------------|------------------|-------------|-------------|
| Thread | G3/8 | G3/8 | G1/2 |
| Depth of thread | 0.512 (13) | 0.512 (13) | 0.670 (17) |
| Counterbore | Ø0.945 (24) | Ø1.108 (28) | Ø1.108 (28) |
| Depth of counterbore | 0.020 (0.5) | 0.020 (0.5) | 0.020 (0.5) |

Caution!

- The packing foil is recyclable.
- O-Ring supplied with delivery.
- The technical information regarding the product presented in this catalogue is for descriptive purposes only. It should not be construed in any case as a guaranteed representation of the product properties in the sense of the law.

HYTOS a.s. CZ - 543 15 Vrchlabí

Tel.: +420-499-403111, Fax: +420-499-403421, e-mail: sales@hytos.cz