

VSCR6 Valvole controllo discesa compensate fisse

Fixed compensated load control valves



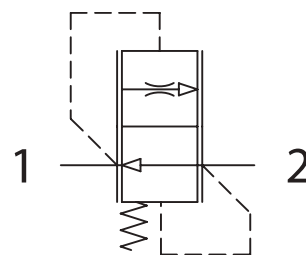
Dati tecnici

Technical data

Olio idraulico <i>Mineral oil</i>	ISO 6743/4 <i>DIN 51524</i>
Viscosità fluido <i>Fluid viscosity</i>	10-500 mm ² /s 45 to 2000 ssu (6 to 420 cSt)
Classe di contaminazione max con filtro <i>Max contamination index with filter</i>	ISO 4406:1999 Classe 19/17/14
Temperatura del fluido <i>Fluid temperature</i>	-20°C +80°C -4°F + 176°F
Temperatura ambiente <i>Ambient temperature</i>	-20°C +50°C -4°F + 122°F

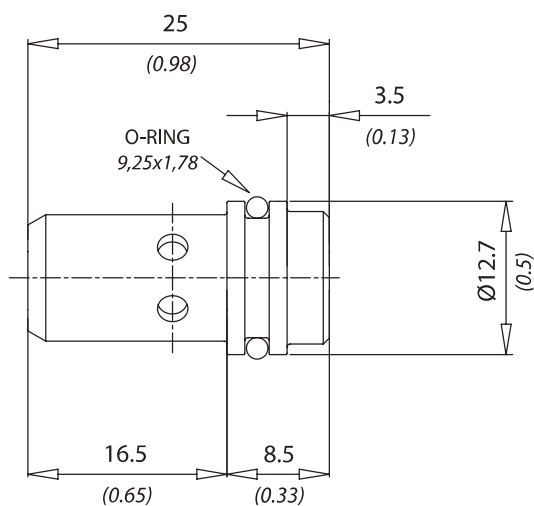
È indispensabile l'utilizzo di un filtro (filtrazione consigliata 15 micron) per proteggere la valvola

It is necessary a filter use to protect the valve (advised filtration 15 micron)

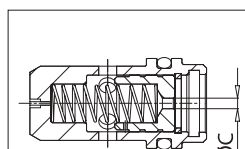


Caratteristiche tecniche / Technical performances

Codice <i>Code</i>	Portata max <i>Max Flow</i> l/min - USgpm	Pressione Max <i>Max pressure</i> bar / PSI	Peso approssimativo/ Kg <i>Approx weight / lb</i>
VSCR6	12 (3)	250 (3600)	0,012 (0.026)



mm
(Inches)



Codice <i>Code</i>	Ø C
VSCR61	Ø 0,5 (Ø 0.020)
VSCR62	Ø 1 (Ø 0.039)
VSCR63	Ø 1,25 (Ø 0.049)
VSCR64	Ø 1,4 (Ø 0.055)
VSCR65	Ø 1,75 (Ø 0.069)
VSCR66	Ø 1,8 (Ø 0.070)
VSCR67	Ø 2 (Ø 0.078)
VSCR68	Ø 2,1 (Ø 0.082)
VSCR69	Ø 2,3 (Ø 0.090)
VSCR610	Ø 2,4 (Ø 0.094)
VSCR611	Ø 2,6 (Ø 0.102)
VSCR612	Ø 2,75 (Ø 0.108)

Codice ordinazione / Ordering code

VSCR6 - Y

Y	Portata controllata a 100 bar ± 10% <i>Controlled flow at 100 bar ± 10%</i>
1	1 l/min (0.25 USgpm)
2	2 l/min (0.5 USgpm)
3	3 l/min (0.75 USgpm)
4	4 l/min (1 USgpm)
5	5 l/min (1.25 USgpm)
6	6 l/min (1.5 USgpm)
7	7 l/min (1.75 USgpm)
8	8 l/min (2 USgpm)
9	9 l/min (2.25 USgpm)
10	10 l/min (2.5 USgpm)
11	11 l/min (2.75 USgpm)
12	12 l/min (3 USgpm)