

SVCP

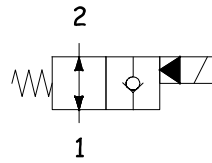
VALVOLA NORMALMENTE APERTA, PILOTATA
NORMALLY OPEN, PILOTED POPPET TYPE

2OMP
OLEODINAMICA

CARATTERISTICHE TECNICHE TECHNICAL CHARACTERISTICS

Pressione massima Maximum pressure	350 bar (5075 psi)
Portata nominale Nominal Flow	70 l/min (18,6 gpm)
Temperatura di esercizio Operating temperature	- 30 / 100°C
Cavità Cavity	C035
Trafilamento interno Internal leakage	0,25cc/min
Coppia Torque	45-55 Nm
Peso Weight	0,56 Kg

SCHEMA IDRAULICO HYDRAULIC SCHEME

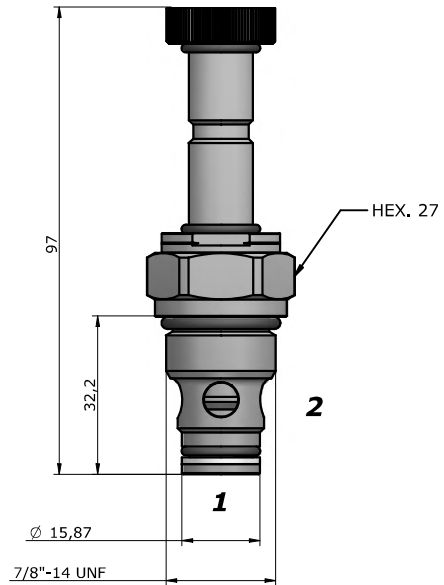


BOBINA COIL

13-39
22 W



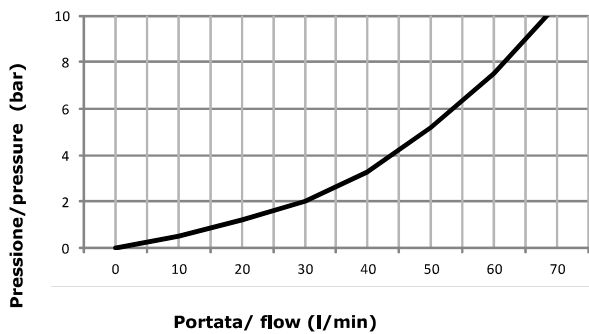
pag. CV.CL.001.13



PRESTAZIONI

PERFORMANCES

1 --> 2
2 --> 1



DESCRIZIONE

DESCRIPTION

Quando la bobina è eccitata, la valvola blocca il passaggio da 2 a 1. In questo modo, il flusso da 1 a 2 è consentito quando la pressione supera la forza del solenoide. Quando la bobina è diseccitata, la SVCP consente il flusso libero sia da 2 a 1 che da 1 a 2.

When the coil is e-energized, the SVM0.S08 allows flow from 2 to 1, and from 1 to 2. When the coil is energized the valve closes, blocking flow from 2 to 1. In this mode, flow from 1 to 2 is allowed once the pressure overcomes the force of the solenoid.

CODICE D'ORDINAZIONE

ORDERING CODE

SVCP-S10-TS4-N-0-D12-D-S200

GUARNIZIONI / SEAL

N = NBR
V = VITON

REGOLAZIONE / REGULATION

0 = SENZA COMANDO MANUALE / NO MANUAL OVERRIDE
2 = SPINGI E GIRA / PUSH AND TWIST
4 = PRESSIONE SU BOTTONE / PUSH BOTTON

TENSIONE / VOLTAGE

000 = SENZA BOBINA / WITHOUT COIL
D12 = 12 VDC
D24 = 24 VDC
D26 = 26 VDC

TIPO CONNETTORE / CONNECTOR TYPE

0 = SENZA BOBINE / WITHOUT COIL
D = DIN 43650
G = DEUTSCH DT04-2P
A = AMP JUNIOR

DIMENSIONE CORPO /

SIZE BODY

OMETTERE/OMIT

200
300
400

MATERIALE CORPO /

MATERIAL BODY

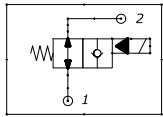
OMETTERE/OMIT

S = STEEL
A = ALLUMINUM

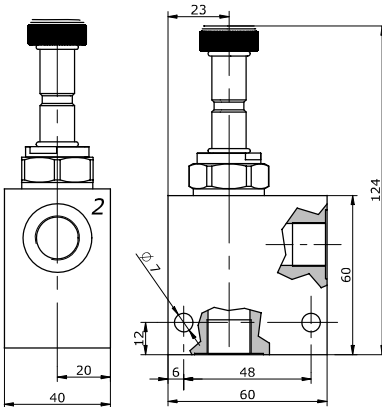
Via Nicolò Copernico 12/c-d
29027 Casoli Di Gariga - Podenzano (PC) Italy

www.oleodinamica2mp.it
Tel +39 0523 523231
Fax +39 0523 524509

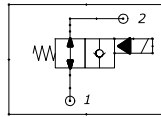
CV.05.029.13



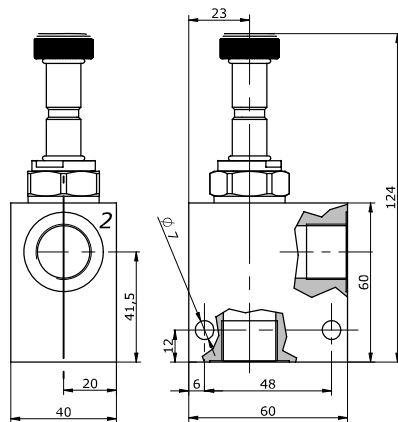
200 BSP3/8"



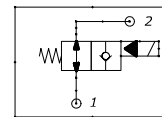
Peso / weight A : 0,9 kg
Peso / weight S : 1,5 kg



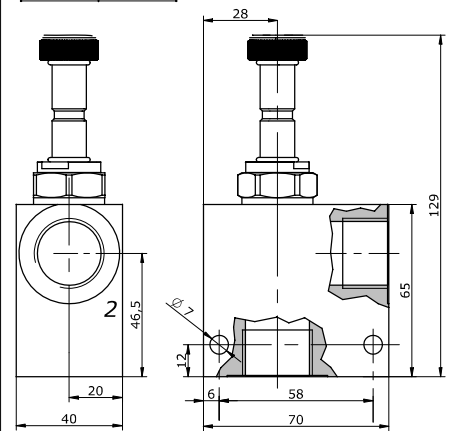
300 BSP1/2"



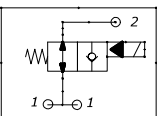
Peso / weight A : 0,9 kg
Peso / weight S : 1,45 kg



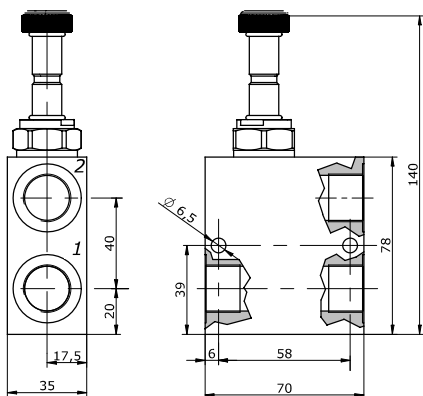
400 BSP3/4"



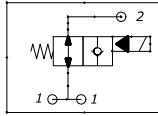
Peso / weight A : 1,0 kg
Peso / weight S : 1,7 kg



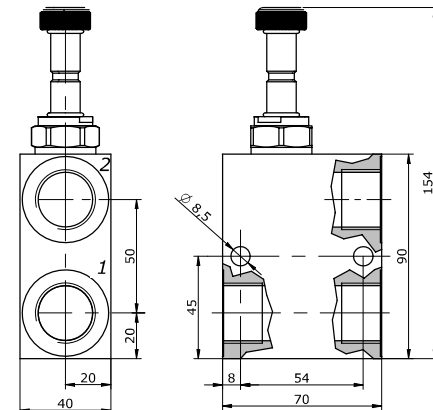
500 BSP1/2"



Peso / weight -Alluminum : 0,30 kg
Peso / weight -Steel : 0,60 kg



600 BSP3/4"



Peso / weight -Alluminum : 0,40 kg
Peso / weight -Steel : 0,70 kg

A RICHIESTA

ON REQUEST

Trattamenti superficiali per corpi valvola / Manifold surface treatments

- **ALLUMINIO**: Ossidazione anodica colorata (nero, blu, oro, rosso);
ACCIAIO: Fosfatazione; brunitura

- **ALUMINIUM**: Colored anodizing (black, blue, gold, red);
STEEL: Phosphating; bluing.

NOTE

NOTES
