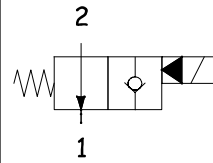


**CARATTERISTICHE TECNICHE**  
**TECHNICAL CHARACTERISTICS**

<b>Pressione massima</b> Maximum pressure	350 bar (5075 psi)
<b>Portata nominale</b> Nominal Flow	70 l/min (18,6 gpm)
<b>Temperatura di esercizio</b> Operating temperature	- 30°C + 100°C
<b>Cavità</b> Cavity	C035
<b>Trafilamento interno</b> Internal leakage	0,25cc/min
<b>Coppia</b> Torque	45-55 Nm
<b>Peso</b> Weight	0,56 Kg

**SCHEMA IDRAULICO**  
**HYDRAULIC SCHEME**

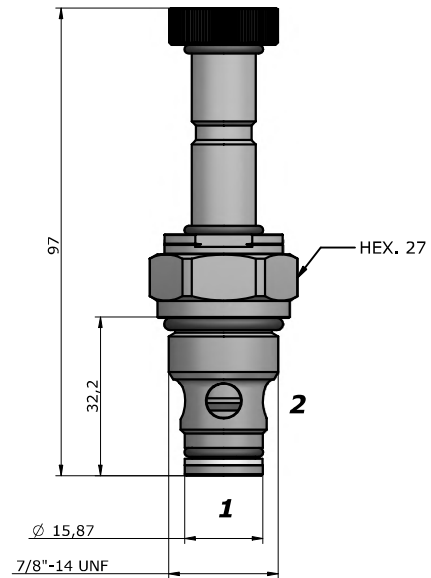


**BOBINA**  
**COIL**

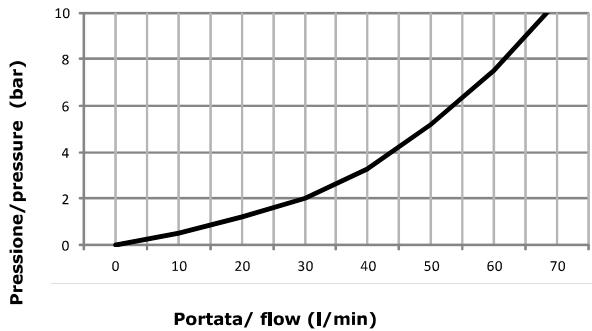


13-39  
 22 W

pag. CV.CL.001.13



**PRESTAZIONI**  
**PERFORMANCES**



**DESCRIZIONE**  
**DESCRIPTION**

Quando la bobina è eccitata, la valvola blocca il passaggio da 2 a 1.  
 Quando la bobina è diseccitata, la SVCP consente il flusso libero da 2 a 1, mentre lo blocca da 1 a 2.

When the coil is energized, blocking flow from 2 to 1.  
 When the coil is de-energized, the SVCP allows flow from 2 to 1, while flow from 1 to 2 is severely restricted.

**CODICE D'ORDINAZIONE**  
**ORDERING CODE**

## SVCP-S10-TS2-N-0-D12-D-S200

GUARNIZIONI / SEAL

**N** = NBR  
**V** = VITON

REGOLAZIONE / REGULATION

**0** = SENZA COMANDO MANUALE / NO MANUAL OVERRIDE  
**2** = SPINGI E GIRA / PUSH AND TWIST  
**4** = PRESSIONE SU BOTTONE / PUSH BOTTON

TENSIONE / VOLTAGE

**000** = SENZA BOBINA / WITHOUT COIL  
**D12** = 12 VDC  
**D24** = 24 VDC  
**D26** = 26 VDC

TIPO CONNETTORE / CONNECTOR TYPE

**0** = SENZA BOBINE / WITHOUT COIL  
**D** = DIN 43650  
**G** = DEUTSCH DT04-2P  
**A** = AMP JUNIOR

DIMENSIONE CORPO /

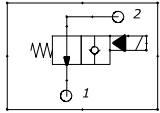
SIZE BODY

**OMETTERE / OMIT**  
 200  
 300  
 400  
 500  
 600

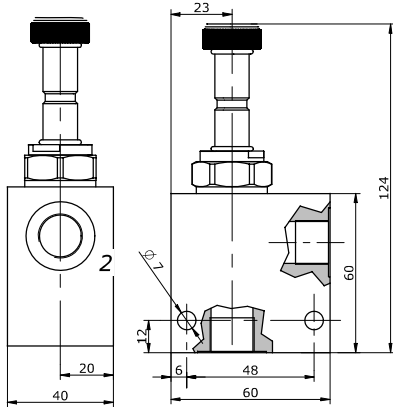
MATERIALE CORPO /

MATERIAL BODY

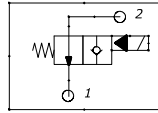
**OMETTERE / OMIT**  
**S** = STEEL  
**A** = ALLUMINUM



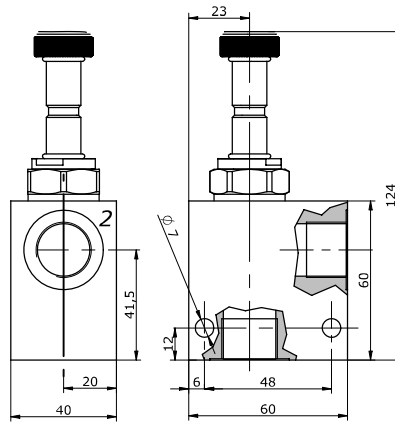
**200** BSP3/8"



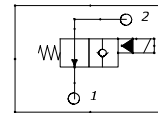
**Peso / weight** A : 0,9 kg  
**Peso / weight** S : 1,5 kg



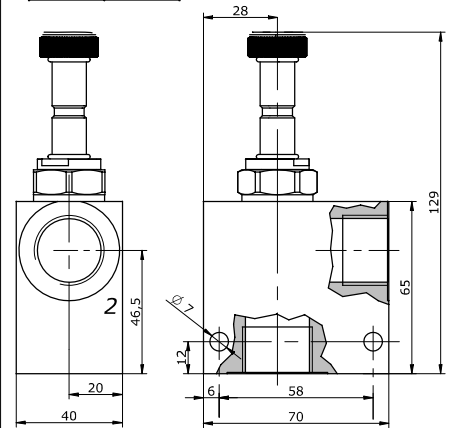
**300** BSP1/2"



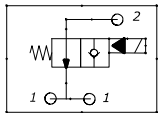
**Peso / weight** A : 0,9 kg  
**Peso / weight** S : 1,45 kg



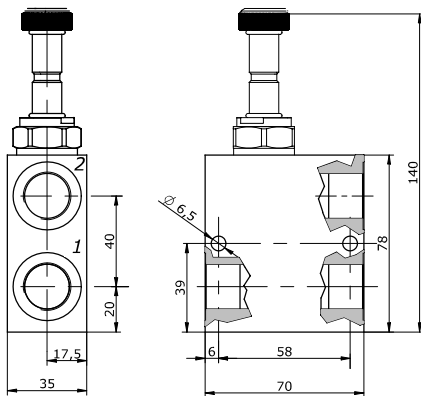
**400** BSP3/4"



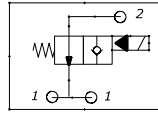
**Peso / weight** A : 1,0 kg  
**Peso / weight** S : 1,7 kg



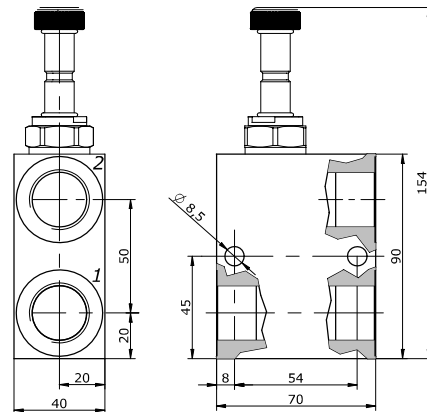
**500** BSP1/2"



**Peso / weight** -Alluminum : 0,30 kg  
**Peso / weight** -Steel : 0,60 kg



**600** BSP3/4"



**Peso / weight** -Alluminum : 0,40 kg  
**Peso / weight** -Steel : 0,70 kg

## A RICHIESTA

ON REQUEST

### Trattamenti superficiali per corpi valvola / Manifold surface treatments

- **ALLUMINIO**: Ossidazione anodica colorata ( nero, blu, oro, rosso);  
**ACCIAIO**: Fosfatazione; brunitura

- **ALUMINIUM**: Colored anodizing (black, blue, gold, red);  
**STEEL**: Phosphating; bluing.

## NOTE

NOTES

---



---