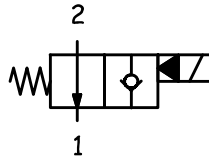


**CARATTERISTICHE TECNICHE**  
**TECHNICAL CHARACTERISTICS**

<b>Pressione massima</b> Maximum pressure	300 bar (4350 psi)
<b>Portata nominale</b> Nominal Flow	40 l/min (10,6 gpm)
<b>Temperatura di esercizio</b> Operating temperature	-30 / 100 °C
<b>Cavità</b> Cavity	C007
<b>Trafilamento interno</b> Internal leakage	5 cc/min (50 °C; 21 cSt; 300 bar)
<b>Coppia</b> Torque	45-50 Nm
<b>Peso</b> Weight	0,11 kg

**SCHEMA IDRAULICO**  
**HYDRAULIC SCHEME**

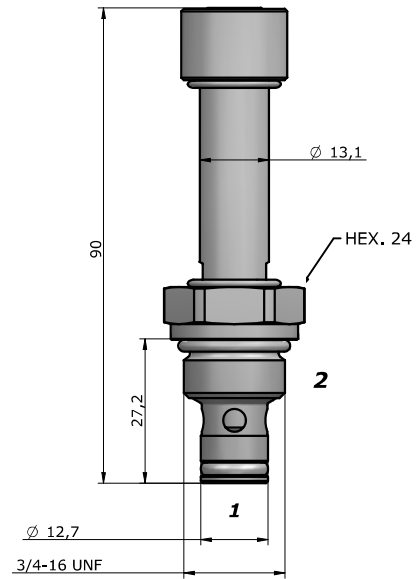


**BOBINA**  
**COIL**



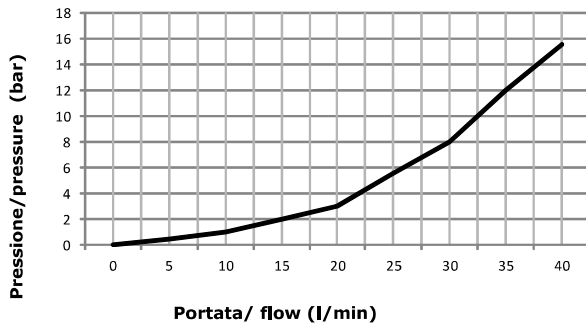
13-39  
18 W

pag. CV.CL.001.13



**PRESTAZIONI**  
**PERFORMANCES**

2 --> 1



**DESCRIZIONE**  
**DESCRIPTION**

Quando la bobina è eccitata, la valvola blocca il passaggio da 2 a 1.  
 Quando la bobina è diseccitata, la SVCP consente il flusso libero da 2 a 1, mentre lo blocca da 1 a 2.

When the coil is energized, blocking flow from 2 to 1.  
 When the coil is de-energized, the SVCP allows flow from 2 to 1, while flow from 1 to 2 is severely restricted.

**CODICE D'ORDINAZIONE**  
**ORDERING CODE**

## SVCP-S08-TS2-N-0-D12-D-S200

GUARNIZIONI / SEAL

**N** = NBR  
**V** = VITON

REGOLAZIONE / REGULATION

**0** = SENZA COMANDO MANUALE / NO MANUAL OVERRIDE  
**3** = PRESSIONE SU SPINA / PUSH PIN  
**4** = PRESSIONE SU BOTTONE / PUSH BOTTON  
**5** = BRUGOLA / ALLEN

TENSIONE / VOLTAGE

**000** = SENZA BOBINA / WITHOUT COIL  
**D12** = 12 VDC  
**D24** = 24 VDC  
**220** = 220 RAC

TIPO CONNETTORE /CONNECTOR TYPE

**0** = SENZA BOBINE / WITHOUT COIL  
**C** = CAVI / LEADS  
**D** = DIN 43650  
**G** = DEUTSCH DT04-2P  
**A** = AMP JUNIOR

DIMENSIONE CORPO /

SIZE BODY

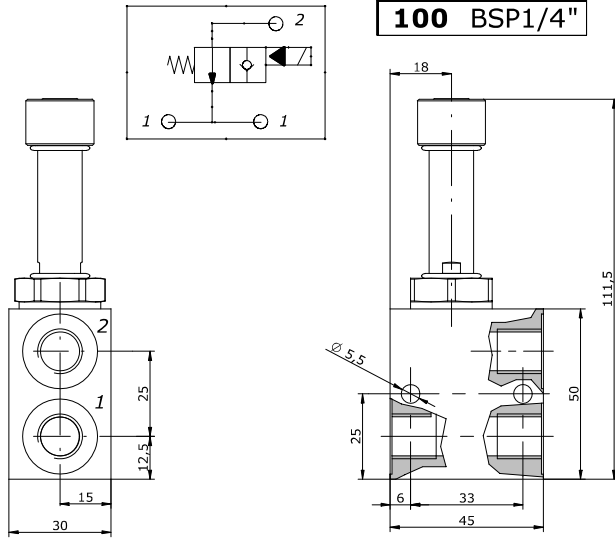
**OMETTERE/OMIT**

**100**  
**200**  
**101**  
**201**  
**102**  
**202**

MATERIALE CORPO /  
MATERIAL BODY

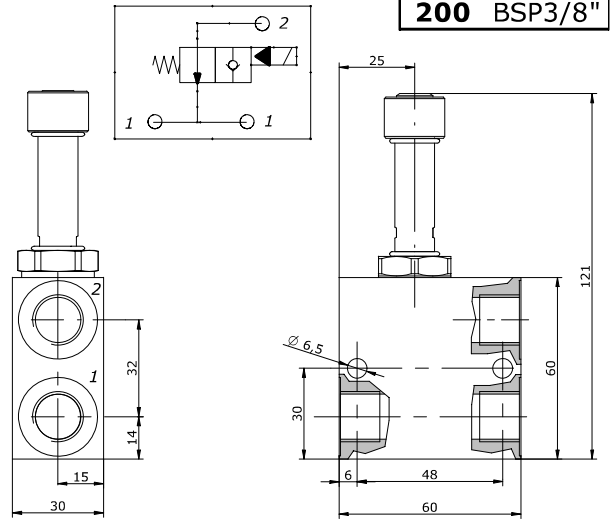
**OMETTERE/OMIT**

**S** = STEEL  
**A** = ALLUMINIUM



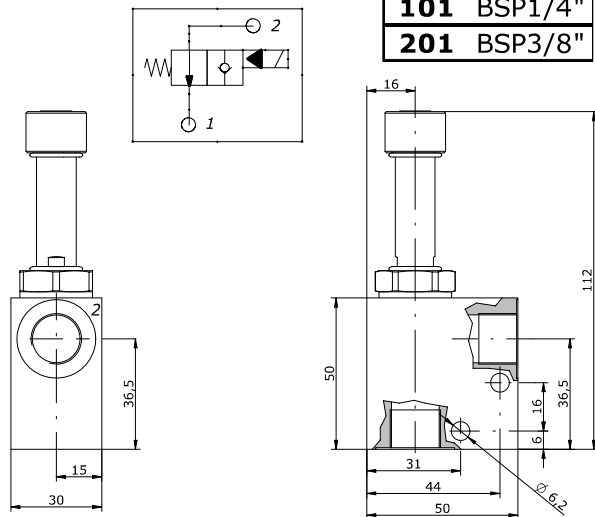
**100** BSP1/4"

**Peso / weight** A : 0,25 kg  
**Peso / weight** S : 0,52 kg



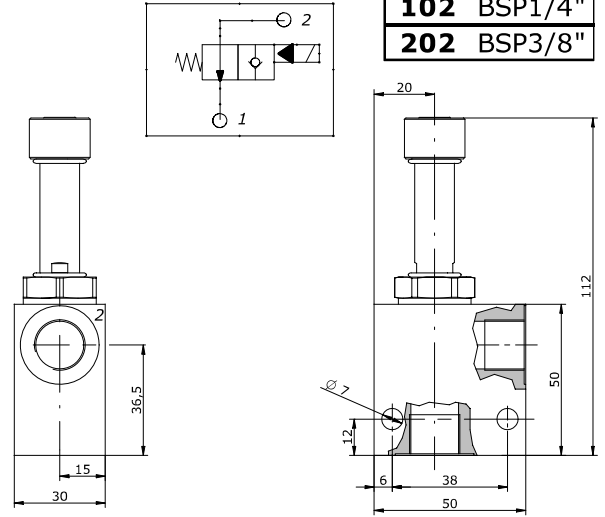
**200** BSP3/8"

**Peso / weight** A : 0,34 kg  
**Peso / weight** S : 0,76 kg



**101** BSP1/4"  
**201** BSP3/8"

**Peso / weight** A : 0,27 kg  
**Peso / weight** S : 0,57 kg



**102** BSP1/4"  
**202** BSP3/8"

**Peso / weight** A : 0,26 kg  
**Peso / weight** S : 0,56 kg

**A RICHIESTA**  
**ON REQUEST**

**Trattamenti superficiali per corpi valvola / Manifold surface treatments**

- **ALLUMINIO:** Ossidazione anodica colorata ( nero, blu, oro, rosso);
- **ACCIAIO:** Fosfatazione; brunitura
- **ALUMINIUM:** Colored anodizing (black, blue, gold, red);
- **STEEL:** Phosphating; bluing.

**NOTE**  
**NOTES**

---



---