

# SVCP

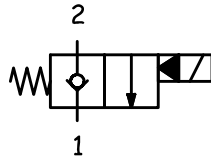
**VALVOLA NORMALMENTE CHIUSA, PILOTATA**  
**NORMALLY CLOSED, PILOTED POPPET TYPE**

**2OMP**  
**OLEODINAMICA**

**CARATTERISTICHE TECNICHE**  
**TECHNICAL CHARACTERISTICS**

<b>Pressione massima</b> Maximum pressure	350 bar (5075 psi)
<b>Portata nominale</b> Nominal Flow	40 l/min (10,6 gpm)
<b>Temperatura di esercizio</b> Operating temperature	-30 / 100 °C
<b>Cavità</b> Cavity	C007
<b>Trafilamento interno</b> Internal leakage	5 cc/min (50 °C; 21 cSt; 200 bar)
<b>Coppia</b> Torque	45-50 Nm
<b>Peso</b> Weight	0,11 kg

**SCHEMA IDRAULICO**  
**HYDRAULIC SCHEME**

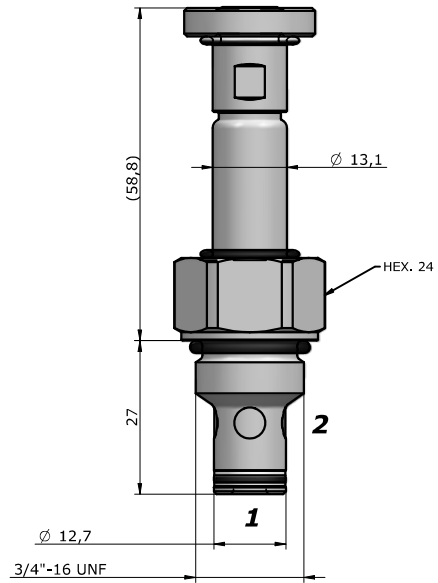


**BOBINA**  
**COIL**



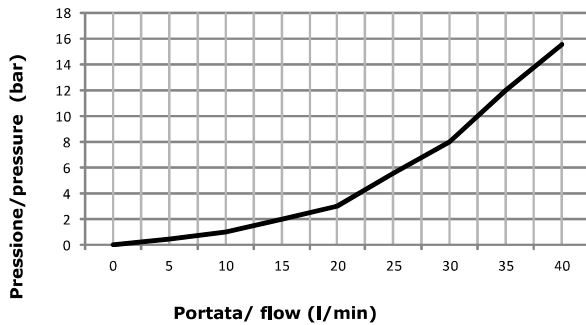
13-39  
 18 W

pag. CV.CL.001.13



**PRESTAZIONI**  
**PERFORMANCES**

1 --> 2  
 2 --> 1



**DESCRIZIONE**  
**DESCRIPTION**

Quando la bobina è eccitata, l'otturatore si solleva e fa sì che da 2 a 1 ci sia passaggio libero, in questo modo da 1 a 2 il flusso è molto ristretto.

Quando la bobina è diseccitata, la SVCP agisce come valvola di ritegno che consente il flusso libero da 1 a 2, mentre lo blocca da 2-1.

When the coil is energized the poppets lifts and opens the 2 to 1 flow path. In this operation mode, flow from 1 to 2 is severely restricted.

When the coil is de-energized, the SVCP acts as check valve allowing free flow from 1 to 2, while blocking from 2 to 1.

**CODICE D'ORDINAZIONE**  
**ORDERING CODE**

## SVCP-S08-TS1-N-0-D12-D-S200

**GUARNIZIONI / SEAL**

**N** = NBR  
**V** = VITON

**REGOLAZIONE / REGULATION**

**0** = SENZA COMANDO MANUALE / NO MANUAL OVERRIDE  
**1** = VITE / SCREW  
**2** = SPINGI E GIRA / PUSH AND TWIST  
**6** = TAPPO PREMUTO / PULL AND HOLD

**TENSIONE / VOLTAGE**

**000** = SENZA BOBINA / WITHOUT COIL  
**D12** = 12 VDC  
**D24** = 24 VDC  
**220** = 220 RAC  
**D26** = 26 VDC

**TIPO CONNETTORE /CONNECTOR TYPE**

**0** = SENZA BOBINE / WITHOUT COIL  
**C** = CAVI / LEADS  
**D** = DIN 43650  
**G** = DEUTSCH DT04-2P  
**A** = AMP JUNIOR

**DIMENSIONE CORPO /**  
**SIZE BODY**

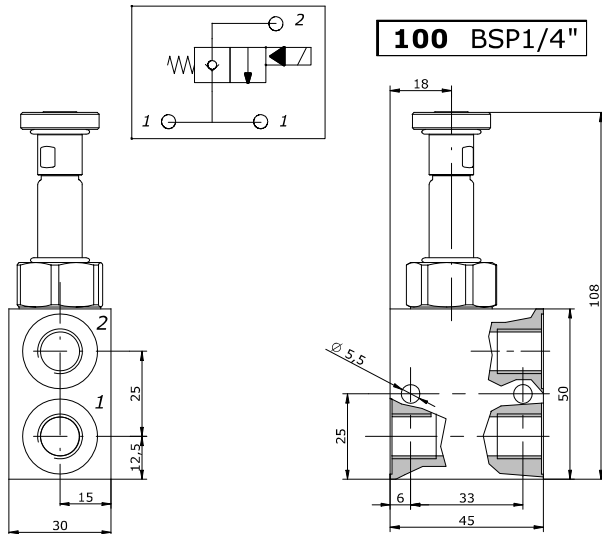
**OMETTERE/OMIT**  
**100**  
**200**  
**101**  
**201**  
**102**  
**202**

**MATERIALE CORPO /**  
**MATERIAL BODY**

**OMETTERE/OMIT**  
**S** = STEEL  
**A** = ALLUMINUM

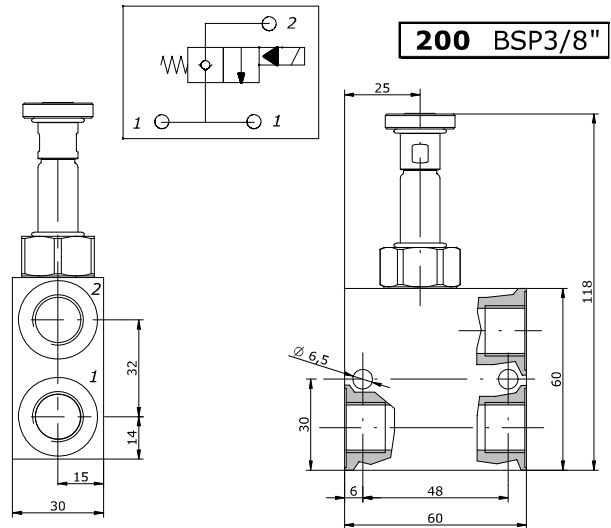
Via Nicolò Copernico 12/c-d  
 29027 Casoli Di Gariga - Podenzano (PC) Italy

www.oleodinamica2mp.it  
 Tel +39 0523 523231  
 Fax +39 0523 524509



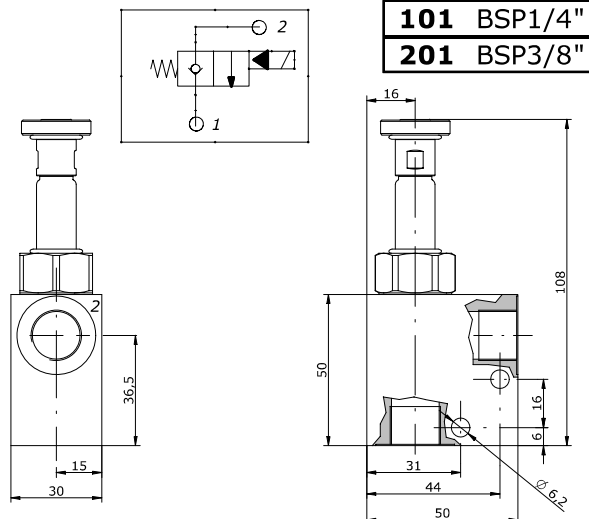
**100** BSP1/4"

**Peso / weight** A : 0,25 kg  
**Peso / weight** S : 0,52 kg



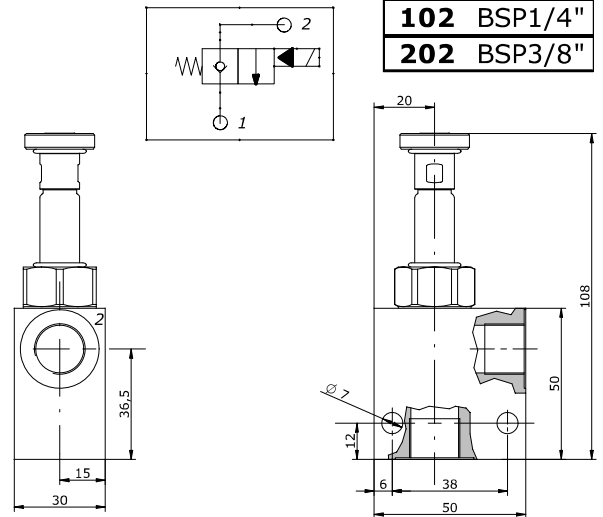
**200** BSP3/8"

**Peso / weight** A : 0,34 kg  
**Peso / weight** S : 0,76 kg



**101** BSP1/4"  
**201** BSP3/8"

**Peso / weight** A : 0,27 kg  
**Peso / weight** S : 0,57 kg



**102** BSP1/4"  
**202** BSP3/8"

**Peso / weight** A : 0,26 kg  
**Peso / weight** S : 0,56 kg

**A RICHIESTA**

**ON REQUEST**

**Trattamenti superficiali per corpi valvola / Manifold surface treatments**

- **ALLUMINIO:** Ossidazione anodica colorata ( nero, blu, oro, rosso);
- **ACCIAIO:** Fosfatazione; brunitura

- **ALUMINIUM:** Colored anodizing (black, blue, gold, red);
- **STEEL:** Phosphating; bluing.

**NOTE**

NOTES

---



---