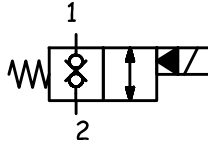


## CARATTERISTICHE TECNICHE TECHNICAL FEATURES

|  |                           |
|--|---------------------------|
| <b>Pressione massima</b><br>Maximum pressure             | 350 bar (3625 psi)        |
| <b>Portata nominale</b><br>Nominal Flow                  | 40 l/min (7,8 gpm)        |
| <b>Temperatura di esercizio</b><br>Operating temperature | -30 / +100 °C             |
| <b>Cavità</b><br>Cavity                                  | C007                      |
| <b>Trafilamento interno</b><br>Internal leakage          | 0,25 cm <sup>3</sup> /min |
| <b>Coppia</b><br>Torque                                  | 40-45 Nm                  |
| <b>Peso</b><br>Weight                                    | 0,11 kg                   |

## SCHEMA IDRAULICO HYDRAULIC SCHEME

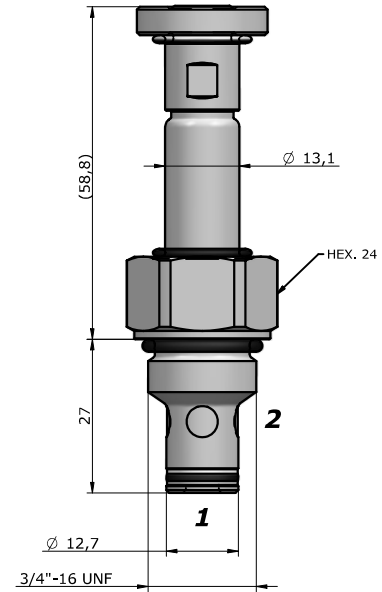


## BOBINA COIL

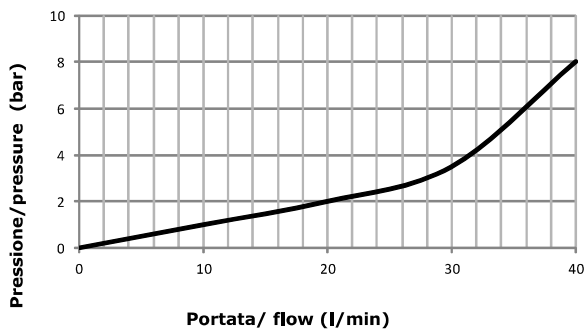


13-39  
18 W

pag. CV.CL.001.13



## PRESTAZIONI PERFORMANCES



## DESCRIZIONE DESCRIPTION

Quando la bobina è eccitata, l'otturatore si solleva e fa sì che da 2 a 1 e da 1 a 2 ci sia passaggio libero.  
 Quando la bobina è diseccitata, la TD3 agisce come valvola di ritegno in entrambe le direzioni.

When the coil is energized, the valve's poppets opens and allows free flow from 1 to 2 and from 2 to 1.  
 When the coil is de-energized, the TD3 blocks flows in both directions.

## CODICE D'ORDINAZIONE ORDERING CODE

# SVCP-S08-TD3-N-0-D12-D-S200

### GUARNIZIONI / SEAL

**N** = NBR  
**V** = VITON

### REGOLAZIONE / REGULATION

**0** = SENZA COMANDO MANUALE / NO MANUAL OVERRIDE  
**3** = PRESSIONE SU SPINA / PUSH PIN  
**4** = PRESSIONE SU BOTTONE / PUSH BOTTON

### TENSIONE / VOLTAGE

**000** = SENZA BOBINA / WITHOUT COIL  
**D12** = 12 VDC  
**D24** = 24 VDC  
**220** = 220 RAC  
**D26** = 26 VDC

### TIPO CONNETTORE /CONNECTOR TYPE

**0** = SENZA BOBINE / WITHOUT COIL  
**C** = CAVI / LEADS  
**D** = DIN 43650  
**G** = DEUTSCH DT04-2P  
**A** = AMP JUNIOR

### DIMENSIONE CORPO /

SIZE BODY

### OMETTERE/OMIT

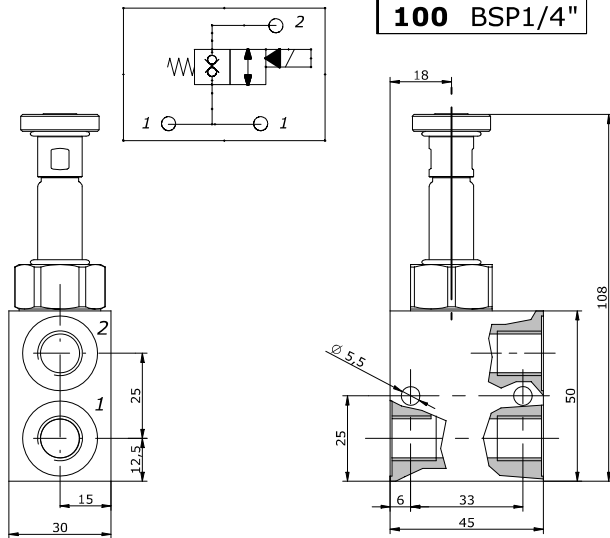
**100**  
**200**  
**101**  
**201**  
**102**  
**202**

### MATERIALE CORPO /

MATERIAL BODY

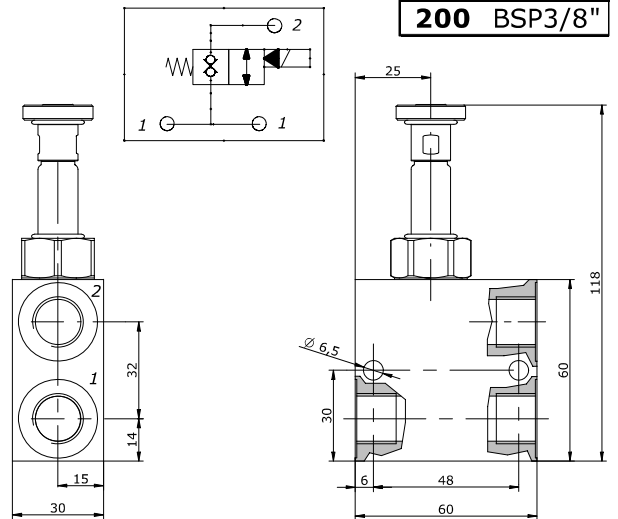
### OMETTERE/OMIT

**S** = STEEL  
**A** = ALLUMINUM



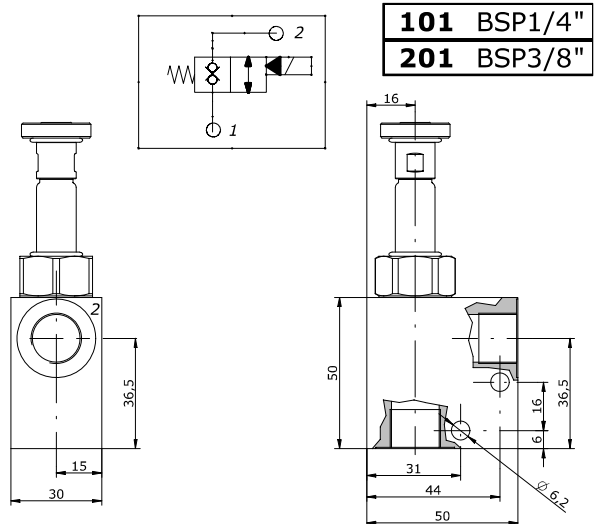
**100** BSP1/4"

**Peso / weight** A : 0,25 kg  
**Peso / weight** S : 0,52 kg



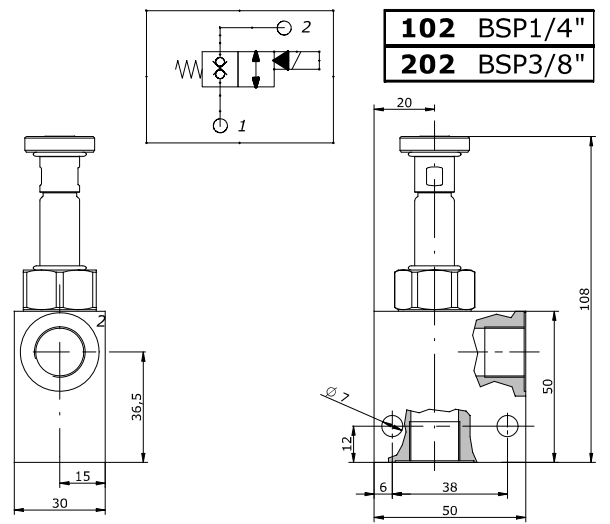
**200** BSP3/8"

**Peso / weight** A : 0,34 kg  
**Peso / weight** S : 0,76 kg



**101** BSP1/4"  
**201** BSP3/8"

**Peso / weight** A : 0,27 kg  
**Peso / weight** S : 0,57 kg



**102** BSP1/4"  
**202** BSP3/8"

**Peso / weight** A : 0,26 kg  
**Peso / weight** S : 0,56 kg

**A RICHIESTA**

ON REQUEST

**T Trattamenti superficiali per corpi valvola / Manifold surface treatments**

- **ALLUMINIO:** Ossidazione anodica colorata ( nero, blu, oro, rosso);
- **ACCIAIO:** Fosfatazione; brunitura

- **ALUMINIUM:** Colored anodizing (black, blue, gold, red);
- **STEEL:** Phosphating; bluing.

**NOTE**  
 NOTES

---



---