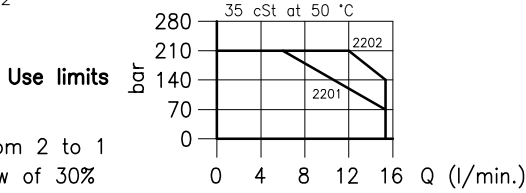
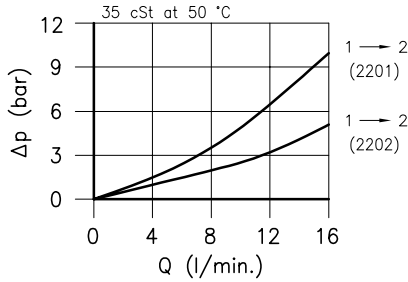
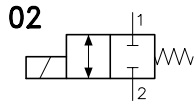
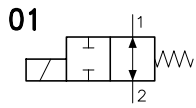


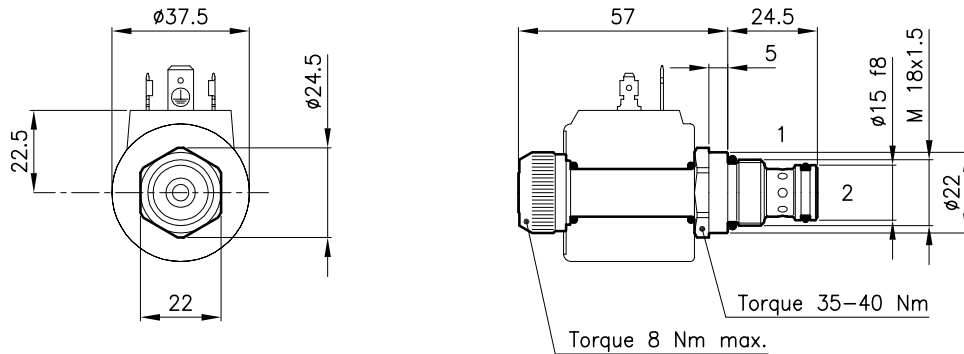
Technical features



With flow from 2 to 1
limit the flow of 30%

Cavity	(For dimensions see catalogue 17.000)	S 20/2
Max. flow	(With flow from 1 to 2) (l/min.)	15
Max. pressure	(bar)	210
Max. leakage	(cm ³ /min.)	20
Response time	(ms)	20 - 40 (Mean value)
Fluid viscosity range	(cSt)	2.8 - 380
Fluid temperature range	(°C)	-20 +80
Mass	(kg)	0.120
Hydraulic flow; mineral oil HM and HV ISO 6074		
Recommended filtration; 19/15 ISO 4466 (25 μ absolutes)		
Standard seals in Polyurethane and Buna N		

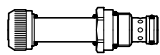
Dimensions



Ordering informations

ETD 20/2201

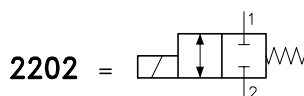
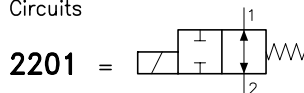
ETD 20/22.. = Valve type



Codes:

ETD 20/2201	25 011 113
ETD 20/2202	25 011 110
External seals kit	90 620 100

Circuits



ETD 20/22.. valves can be assembled on standard bodies 20-L0 series; for dimensions see catalogue 16.010

On the ETD 20 valves must be assembled the Coils B20 series; for dimensions, features and codes see catalogues 09.900 and 09.901.