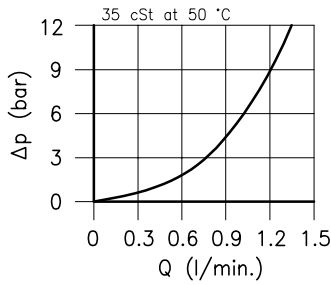
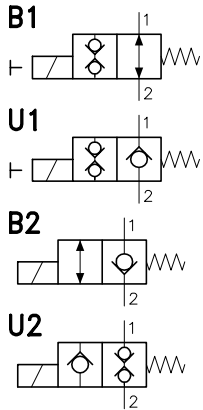


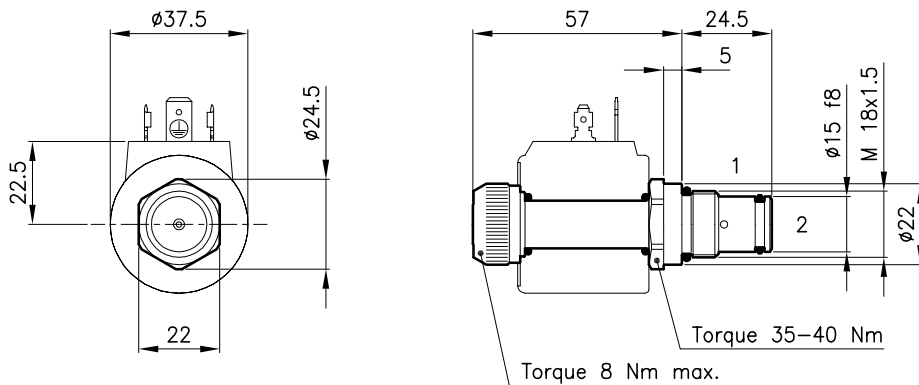
Technical features



In B2 version the flow from 2 to 1 needs a pressure about 180 bar.

Cavity	(For dimensions see catalogue 17.000)	S 20/2
Max. flow	(l/min.)	1.2
Max. pressure	(bar)	210
Response time	(ms)	20 - 40
It change in function of circuit, pressure, flow and fluid viscosity.		(Mean value)
Fluid viscosity range	(cSt)	2.8 - 380
Fluid temperature range	(°C)	-20 +80
Mass	(kg)	0.120
Hydraulic fluid; mineral oil HM and HV ISO 6074		
Recommended filtration; 19/15 ISO 4466 (25 μ absolutes)		
Standard seals in Polyurethane and Buna N		

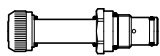
Dimensions



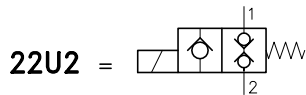
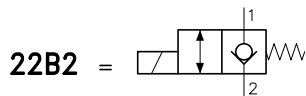
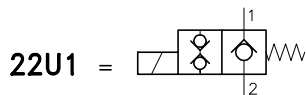
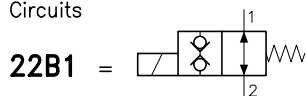
Ordering informations

ECD 20/22U1-MO

ECD 20/22.. = Valve type



Circuits



MO = Manual override (Only B1 and U1 version)
(Omit if not request)

Codes:

ECD 20/22B1	25 011 109
ECD 20/22B1-MO	25 011 147
ECD 20/22U1	25 011 120
ECD 20/22U1-MO	25 011 146
ECD 20/22B2	25 011 104
ECD 20/22U2	25 011 105
External seals kit	90 620 100

ECD 20/22.. valves can be assembled on standard bodies 20-L0 series; for dimensions see catalogue 16.010

On the ECD 20 valves must be assembled the Coils B20 series; for dimensions, features and codes see catalogues 09.900 and 09.901.