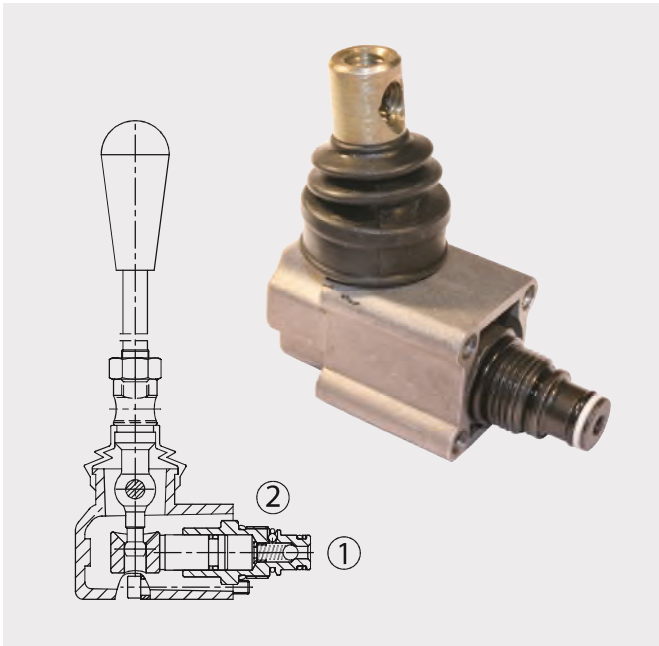


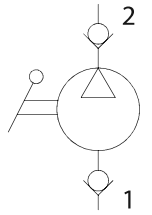
PME Pompe a mano Cartridge hand pumps



Dati tecnici

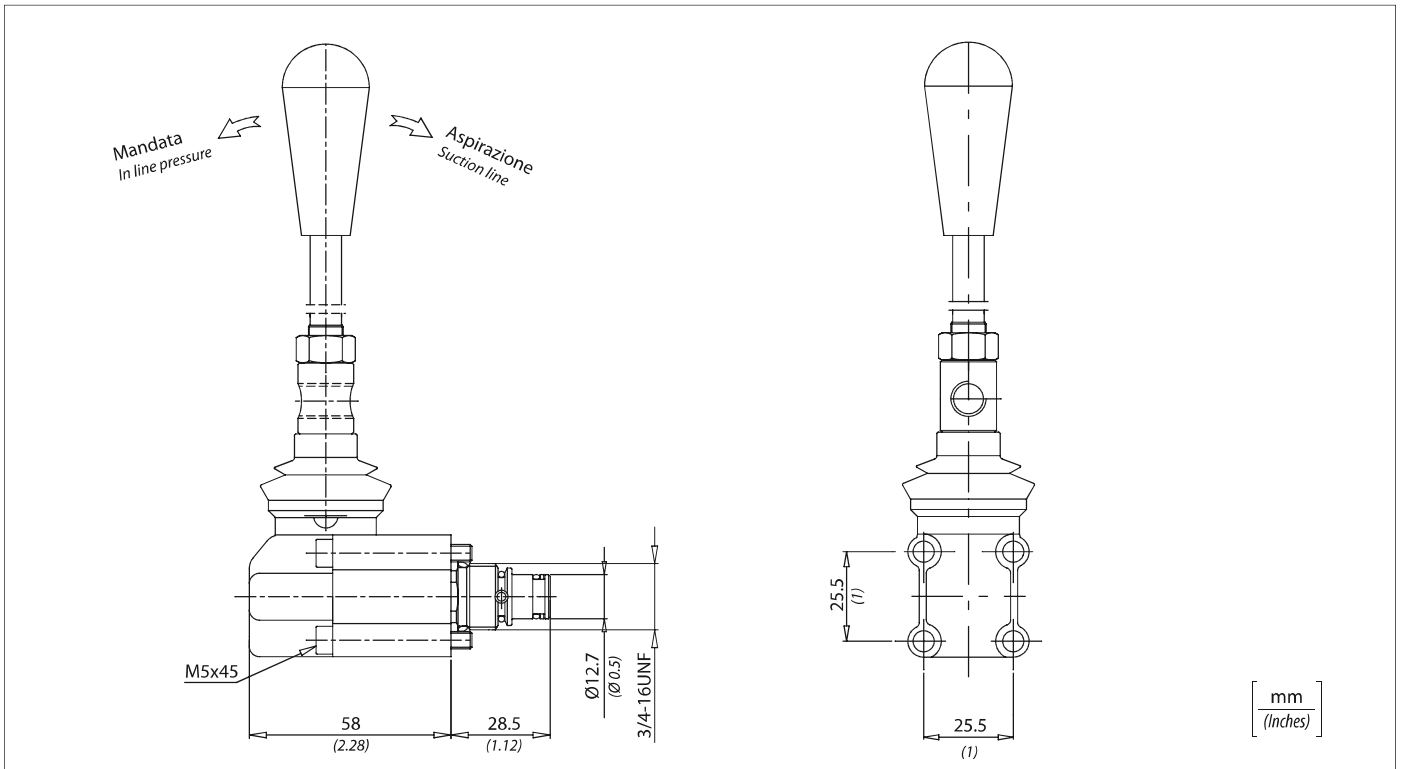
Technical data

Olio idraulico Mineral oil	ISO 6743/4 DIN 51524
Viscosità fluido Fluid viscosity	10-500 mm ² /s 45 to 2000 ssu (6 to 420 cSt)
Classe di contaminazione max con filtro Max contamination index with filter	ISO 4406:1999 Classe 19/17/14
Temperatura del fluido Fluid temperature	-20°C +80°C -4°F + 176°F
Temperatura ambiente Ambient temperature	-20°C +50°C -4°F + 122°F



È indispensabile l'utilizzo di un filtro (filtrazione consigliata 15 micron) per proteggere la valvola

It is necessary a filter use to protect the valve (advised filtration 15 micron)



Caratteristiche tecniche Technical performances

Codice Code	Cilindrata Displacement cm ³ - in ³	Pressione Max Max pressure bar / PSI	Peso approssimativo Approx weight Kg / lb	Coppia di serraggio Tightening torque Nm / lbf ft	Cavità Cavity
PME5	1 (0.06)	300 (4000)	0,4 (0.88)	25-30 (19-22)	SAE8/2
PME6	2 (0.12)	200 (3000)			

