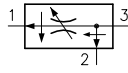
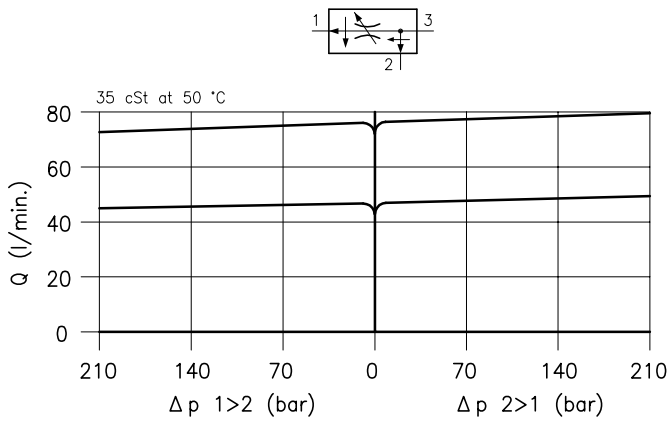
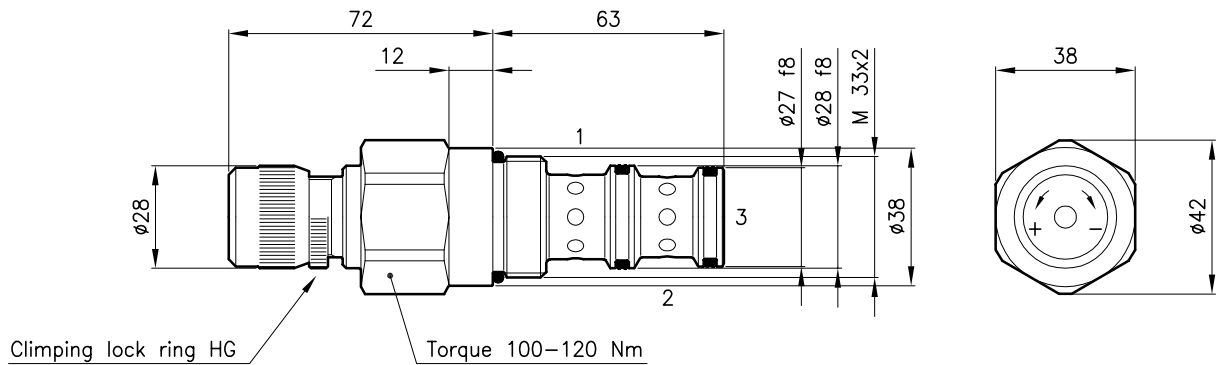


**Technical features**



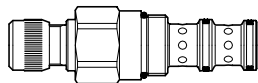
Cavity	(For dimensions see catalogue 17.000)	S 50/3
Max. inlet flow	(l/min.)	120
Flow setting range	(l/min.)	type D 0.05 - 45
		type Q 0.05 - 75
Max. pressure	(bar)	315
Min pressure difference	(bar)	7
Fluid viscosity range	(cSt)	2.8 - 380
Fluid temperature range	(°C)	-20 +80
Mass	(kg)	0.600
Hydraulic fluid; mineral oil HM and HV		ISO 6074
Recommended filtration; 19/15 ISO 4466 (25 μ absolutes)		
Complete adjustment range obtained with 1 knob turn		
Standard seals in Polyurethane and Buna N		

**Dimensions**



**Ordering informations**

**DPZ 50** = Valve type



Flow setting range

**D** = 0.05 - 45 l/min

**Q** = 0.05 - 75 l/min

Adjustment type

**H** = Standard

**HG** = With clamping lock ring

**DPZ 50/D-H**

Codes:

DPZ 50/D-H      53 011 126

DPZ 50/Q-H      53 011 127

DPZ 50/D-HG      53 011 128

DPZ 50/Q-HG      53 011 129

External seals kit      90 620 107

DPZ 50 valves can be assembled on standard bodies 50-C3 series; for dimensions see catalogue 16.010