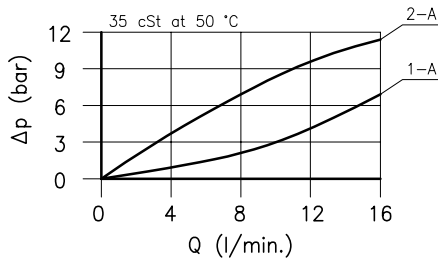
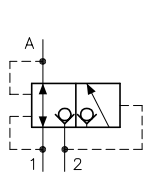
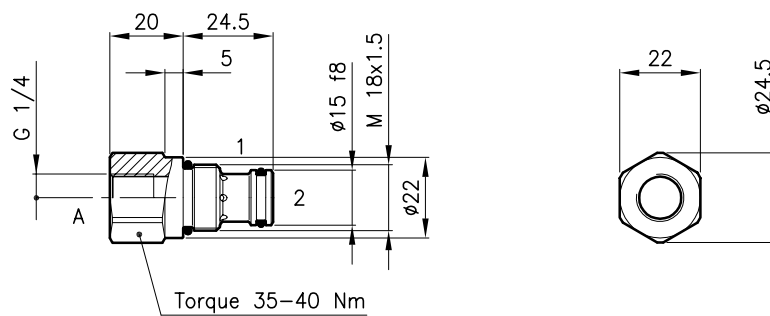


Technical features



Cavity (For dimensions see catalogue 17.000)	S 20/2
Nominal flow (l/min.)	12
Max. pressure (bar)	210
Fluid viscosity range (cSt)	2.8 - 380
Fluid temperature range (°C)	-20 +80
Mass (kg)	0.060
Hydraulic fluid; mineral oil HM and HV	ISO 6074
Recommended filtration; 19/15 ISO 4466 (25 μ absolutes)	
Standard seals in Polyurethane and Buna N	

Dimensions



Ordering informations

CCE 20/B05

CCE 20 = Valve type



Cartridge port

B05 = G 1/4 Standard

Codes:

CCE 20/B05 22 011 103

External seals kit 90 620 100

CCE 20 valves can be assembled on standard bodies 20-LO series; for dimensions see catalogue 16.010