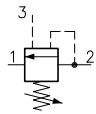


Technical features

LCS 20 valve are mainly used to charge accumulators or for pump unloading in high-low pressure circuits. They allow the automatic pump's by-pass as the circuit pressure reaches the setting value. The valve closes when this value drops at 88% and pump starts charging the accumulator. LCS 20 valve also act as pressure relieving on main circuit and always must be combined with logical elements:

- version ELP .. P1 (high-low pressure)
- version ELP 30/D3-1.23 (accumulators)



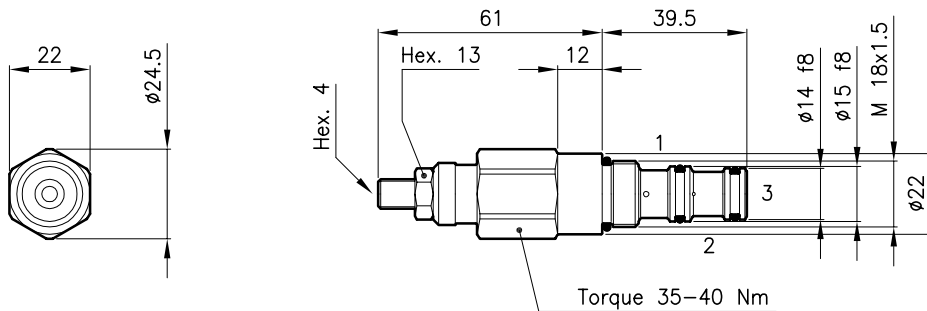
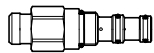
Calculation of Pr value

$$Pr = \frac{P \cdot d}{100}$$

Where:

- Pr = Reset pressure (bar)
- P = Setting pressure (bar)
- d = Differential area

Cavity (For dimensions see catalogue 17.000)	S 20/3
Max. flow (l/min.)	1.5
Max. pressure (bar)	350
Adjustment range (bar)	10 - 315
Differential area (d) %	88 ± 1.5%
Fluid viscosity range (cSt)	2.8 - 380
Fluid temperature range (°C)	-20 +80
Mass (kg)	0.160
Standard setting obtained with 1 l/min.	
Hydraulic flow; mineral oil HM and HV ISO 6074	
Recommended filtration; 19/15 ISO 4466 (25 μ absolutes)	
Standard seals in Polyurethane and Buna N	

Dimensions

Ordering informations
LCS 20/D-N
LCS 20 = Valve type


Standard springs

Type	Setting range	Factory set
D	= 10 - 210 bar	140 bar
Q	= 70 - 315 bar	210 bar

Adjustment type

N = Standard adjustment


Codes:

LCS 20/D-N	21 011 268
LCS 20/Q-N	21 011 269
External seals kit	90 620 101

LCS 20 valves can be assembled on standard bodies 20-C3 series; for dimensions see catalogue 16.010