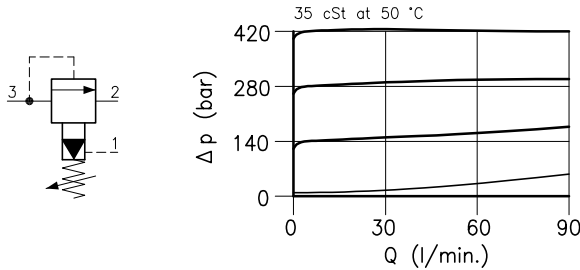
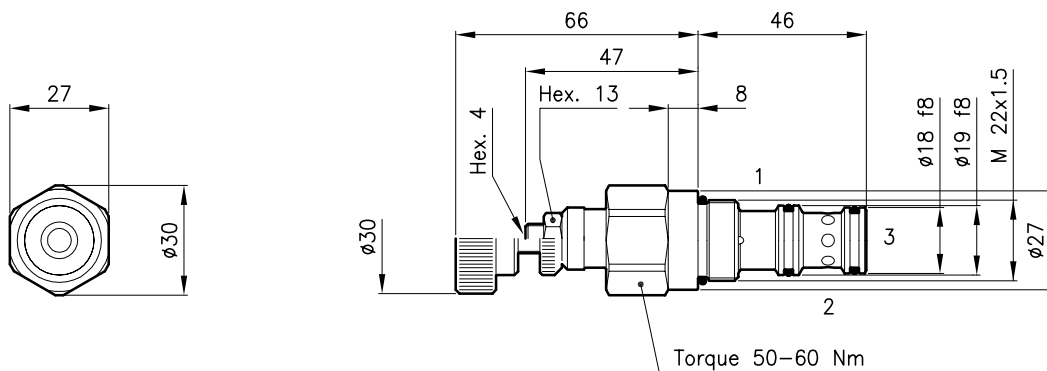


Technical features



| | | |
|---|---------------------------------------|-----------|
| Cavity | (For dimensions see catalogue 17.000) | S 30/3 |
| Max. flow | (l/min.) | 70 |
| Max. inlet pressure | (bar) | 420 |
| Max. pressure on line 2 | (bar) | 420 |
| Max. drain on line 1 | (l/min.) | 1.2 |
| Fluid viscosity range | (cSt) | 2.8 - 380 |
| Fluid temperature range | (°C) | -20 +80 |
| Mass | (kg) | 0.200 |
| Standard setting obtained with 10 l/min. | | |
| Hydraulic fluid; mineral oil HM and HV | ISO 6074 | |
| Recommended filtration; 19/15 ISO 4466 (25 μ absolutes) | | |
| Standard seals in Polyurethane and Buna N | | |

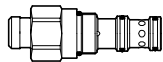
Dimensions



Ordering informations

LPY 30/D-N

LPY 30 = Valve type



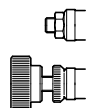
Standard springs

| Type | Setting range | Factory set |
|----------|---------------|-------------|
| D | 10 - 210 bar | 140 bar |
| Q | 105 - 420 bar | 315 bar |

Adjustment type

N = Standard adjustment

V = Handknob adjustment



Codes:

| | |
|--------------------|------------|
| LPY 30/D-N | 31 011 130 |
| LPY 30/Q-N | 31 011 131 |
| LPY 30/D-V | 31 011 132 |
| LPY 30/Q-V | 31 011 133 |
| External seals kit | 90 620 104 |

LPY 30 valves can be assembled on standard bodies 30-C3 series; for dimensions see catalogue 16.010