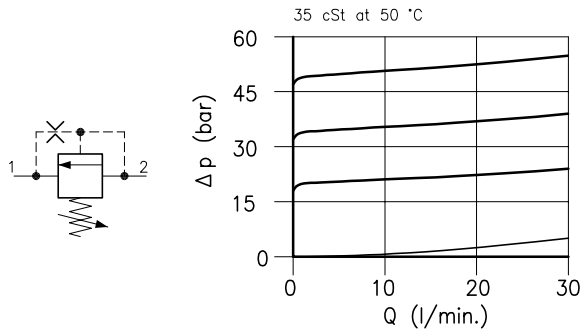
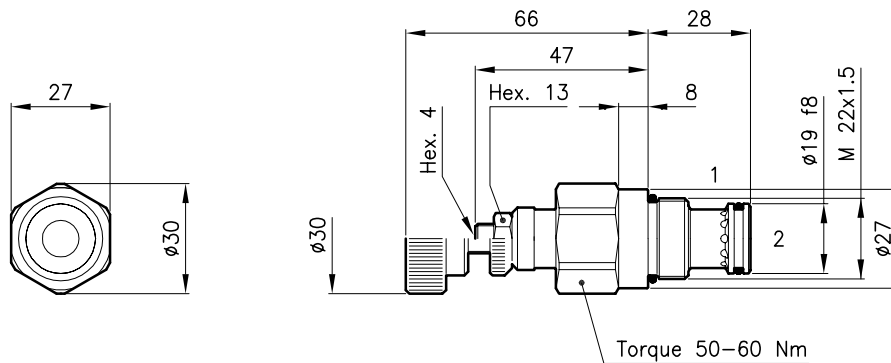


Technical features



Cavity	(For dimensions see catalogue 17.000)	S 30/2
Max. flow	(l/min.)	30
Max. inlet pressure	(bar)	55
Drain at max. pressure	(cm ³ /min.)	800
Fluid viscosity range	(cSt)	2.8 - 380
Fluid temperature range	(°C)	-20 +80
Mass	(kg)	0.180
Cracking pressure 90% of setting value		
Reseat pressure 80% of setting value		
Cracking pressure defined with 2 l/min.		
Standard setting obtained with 10 l/min.		
Hydraulic fluid; mineral oil HM and HV ISO 6074		
Recommended filtration; 19/15 ISO 4466 (25 μ absolutes)		
Standard seals in Polyurethane and Buna N		

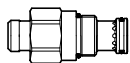
Dimensions



Ordering informations

LPT 30/D-N

LPT 30 = Valve type



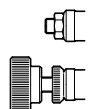
Standard springs

Type	Setting range	Factory set
U	3.5 - 21 bar	15 bar
D	7 - 35 bar	20 bar
T	14 - 50 bar	35 bar

Adjustment type

N = Standard adjustment

V = Handknob adjustment



Codes:

LPT 30/U-N	31 011 211
LPT 30/D-N	31 011 212
LPT 30/T-N	31 011 213
LPT 30/U-V	31 011 214
LPT 30/D-V	31 011 215
LPT 30/T-V	31 011 216
External seals kit	90 620 103

LPT 30 valves can be assembled on standard bodies 30-LO series; for dimensions see catalogue 16.010