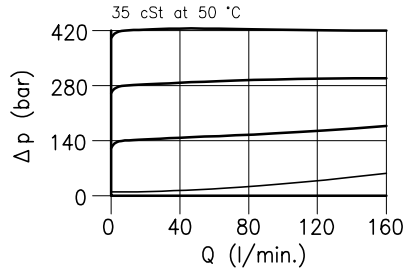
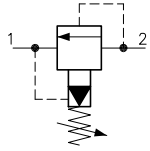
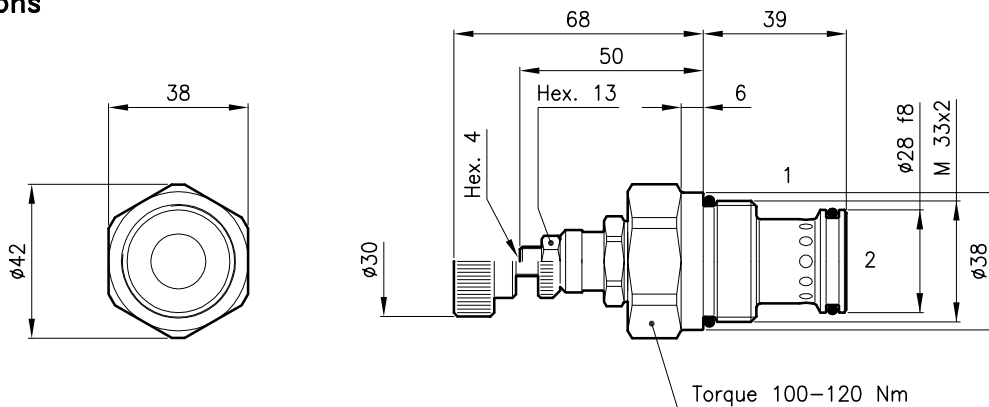


**Technical features**



|   |           |
|---|-----------|
| Cavity (For dimensions see catalogue 17.000)            | S 50/2    |
| Max. flow (l/min.)                                      | 160       |
| Max. inlet pressure (bar)                               | 420       |
| Max. pressure on line 1 (bar)                           | 210       |
| Fluid viscosity range (cSt)                             | 2.8 – 380 |
| Fluid temperature range (°C)                            | -20 +80   |
| Max. leakage (cm <sup>3</sup> /min.)                    | 25        |
| Mass (kg)   | 0.310     |
| Cracking pressure 95% of setting value                  |           |
| Reseat pressure 85% of setting value                    |           |
| Cracking pressure defined with 1 l/min.                 |           |
| Standard setting obtained with 10 l/min.                |           |
| Hydraulic fluid; mineral oil HM and HV ISO 6074         |           |
| Recommended filtration; 19/15 ISO 4466 (25 μ absolutes) |           |
| Standard seals in Polyurethane and Buna N               |           |

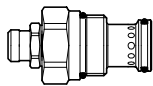
**Dimensions**



**Ordering informations**

**LPI 50/D-N**

**LPI 50** = Valve type

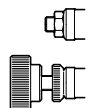


Standard springs

| Type     | Setting range | Factory set |
|----------|---------------|-------------|
| <b>D</b> | 14 – 210 bar  | 140 bar     |
| <b>Q</b> | 105 – 420 bar | 315 bar     |

Adjustment type

- N** = Standard adjustment
- V** = Handknob adjustment



Codes:

|                    |            |
|--------------------|------------|
| LPI 50/D-N         | 51 011 103 |
| LPI 50/Q-N         | 51 011 104 |
| LPI 50/D-V         | 51 011 105 |
| LPI 50/Q-V         | 51 011 106 |
| External seals kit | 90 620 106 |

LPI 50 valves can be assembled on standard bodies 50-LO series; for dimensions see catalogue 16.010