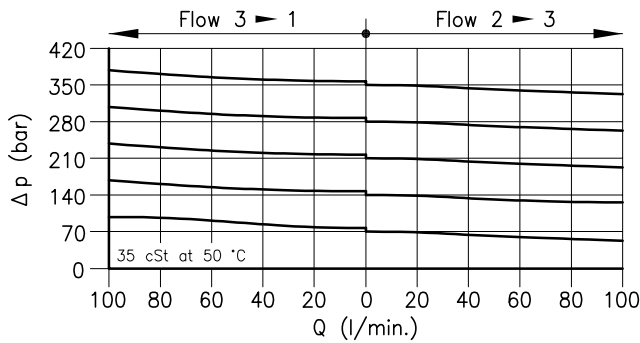
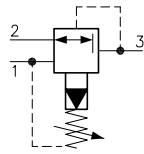
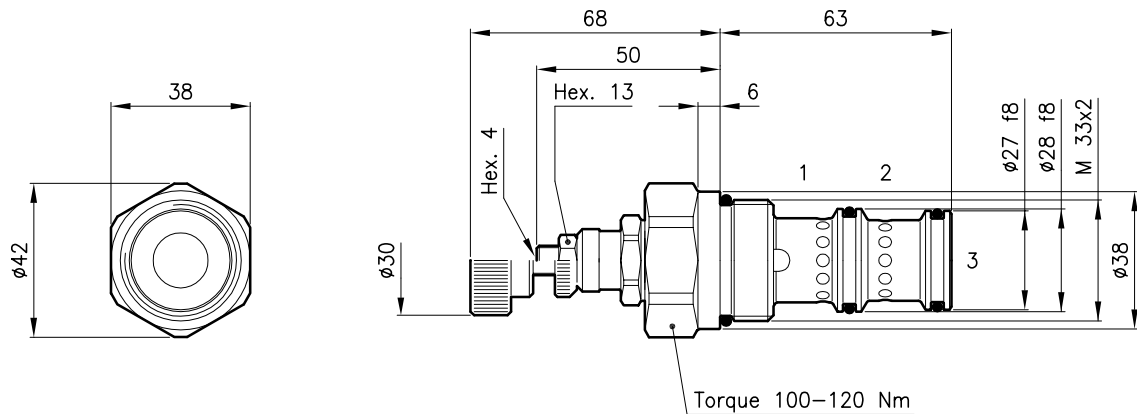


Technical features



Cavity	(For dimensions see catalogue 17.000)	S 50/3
Max. flow	(l/min.)	90
Max. inlet pressure	(bar)	420
Pressure setting range	(bar)	14 - 420
Max. drain	(l/min.)	0.4 - 0.6
Fluid viscosity range	(cSt)	2.8 - 380
Fluid temperature range	(°C)	-20 +80
Mass	(kg)	0.400
Standard setting obtained with 1 l/min.		
Hydraulic fluid; mineral oil HM and HV ISO 6074		
Recommended filtration; 19/15 ISO 4466 (25 μ absolutes)		
Standard seals in Polyurethane and Buna N		

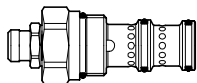
Dimensions



Ordering informations

RLP 50/D-N

RLP 50 = Valve type



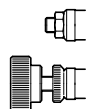
Standard spring

Type	Setting range	Factory set
D	= 14 - 210 bar	140 bar
Q	= 105 - 420 bar	315 bar

Adjustment type

N = Standard adjustment

V = Handknob adjustment



Codes:

RLP 50/D-N	51 011 109
RLP 50/Q-N	51 011 159
RLP 50/D-V	51 011 110
RLP 50/Q-V	51 011 160
External seals kit	90 620 107

RLP 50 valves can be assembled on standard bodies 50-C3 series; for dimensions see catalogue 16.010