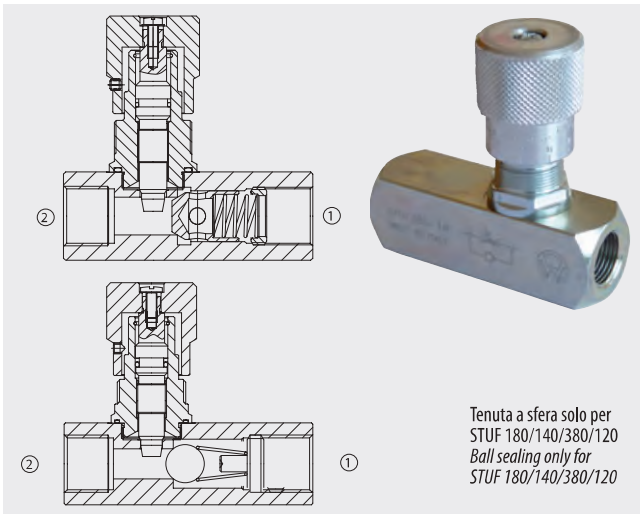


STUF-BSP

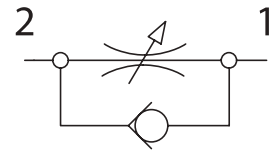
Valvole di controllo flusso unidirezionali
Unidirectional flow control valves



Tenuta a sfera solo per
STUF 180/140/380/120
Ball sealing only for
STUF 180/140/380/120

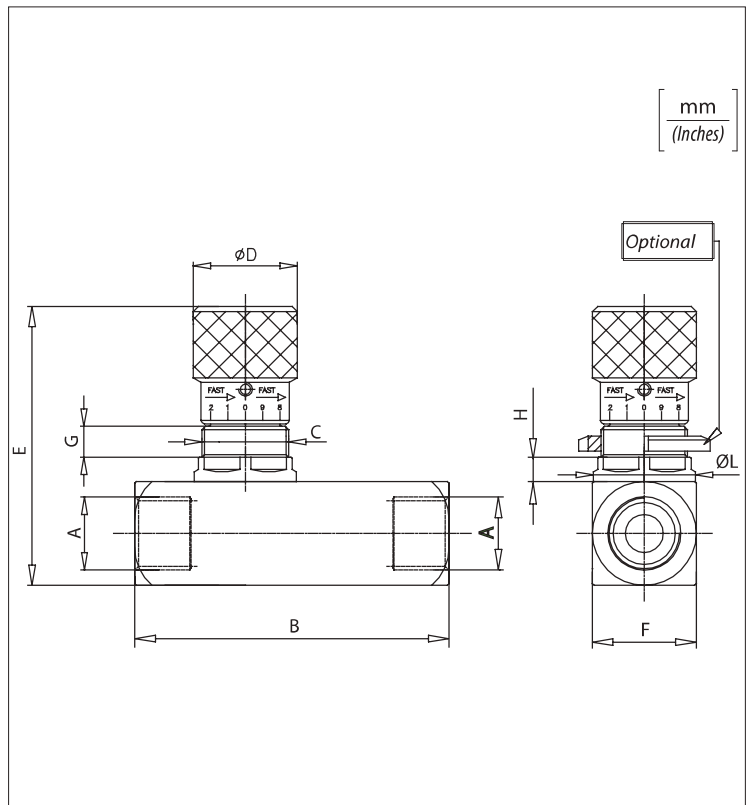
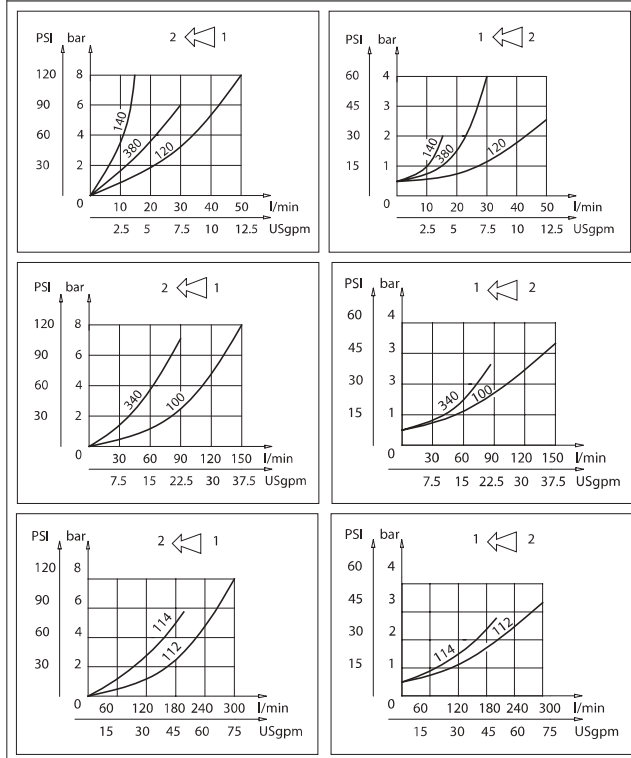
Dati tecnici Technical data

Olio idraulico Mineral oil	ISO 6743/4 DIN 51524
Viscosità fluido Fluid viscosity	10-500 mm ² /s 45 to 2000 ssu (6 to 420 cSt)
Classe di contaminazione max con filtro Max contamination index with filter	ISO 4406:1999 Classe 19/17/14
Temperatura del fluido Fluid temperature	-20°C +80°C -4°F +176°F
Temperatura ambiente Ambient temperature	-20°C +50°C -4°F +122°F



È indispensabile l'utilizzo di un filtro (filtrazione consigliata 15 micron) per proteggere la valvola
It is necessary a filter use to protect the valve (advised filtration 15 micron)

Perdite di carico Pressure drops



Caratteristiche tecniche / Technical performances

Codice Code	A	Portata max Max Flow l/min-USgpm	Pressione Max Max pressure bar/PSI	B	C	D	E	F	G	H	L	Optional Code	Peso approssimativo Approx weight Kg/lb
STUF180	BSPP 1/8	10 (2.5)	400 (5800)	58 (2.28)	M15x1	20 (0.79)	60,5 (2.38)	20 (0.79)	8 (0.31)	5,5 (0.21)	19,5 (0.76)	84100031	0,31 (0.7)
STUF140	BSPP 1/4	15 (4)		66 (2.60)	M20x1	30 (1.18)	75 (2.95)	25 (0.98)	7,5 (0.29)	6 (0.23)	24,5 (0.96)	84100022	0,38 (0.84)
STUF380	BSPP 3/8	30 (8)		77 (3.03)	M25x1,5	33 (1.30)	81 (3.19)	30 (1.18)	9 (0.35)	7 (0.27)	29,5 (1.16)	84100023	0,63 (1.40)
STUF120	BSPP 1/2	50 (13)		91 (3.58)	M35x1,5	42 (1.65)	110 (4.33)	40 (1.57)	15,5 (0.61)	8 (0.31)	39,5 (1.55)	84100024	1,45 (3.2)
STUF340	BSPP 3/4	80 (21)		112,5 (4.43)	M35x1,5	42 (1.65)	110 (4.33)	40 (1.57)					
STUF100	BSPP 1	150 (40)		141 (5.55)	115 (4.53)	45 (1.77)	115 (4.53)	45 (1.77)	13,5 (0.53)	10 (0.39)	50 (1.96)	84100030	2 (4.4)
STUF114	BSPP 1-1/4	200 (50)	350 (5000)	155 (6.10)	M45x1,5	53 (2.08)	137 (5.39)	55 (2.16)	10 (0.39)	50 (1.96)	84100030	3,3 (7.25)	
STUF112	BSPP 1-1/2	300 (80)		168 (6.61)			147 (5.78)	65 (2.55)					65 (2.55)

Codice ordinazione Ordering code

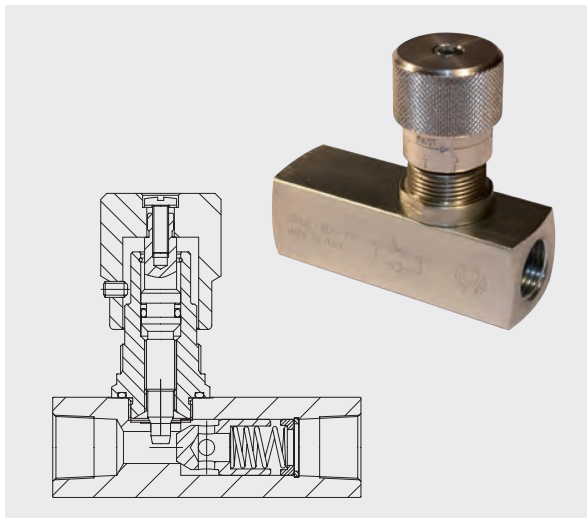
STUF - X

X Dimensione
Size

180	BSPP 1/8
140	BSPP 1/4
380	BSPP 3/8
120	BSPP 1/2
340	BSPP 3/4
100	BSPP 1
114	BSPP 1-1/4
112	BSPP 1-1/2

STUF-NPTF

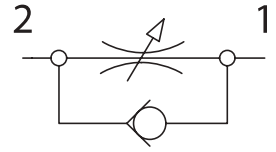
Valvole di controllo flusso unidirezionali
Unidirectional flow control valves



Dati tecnici

Technical data

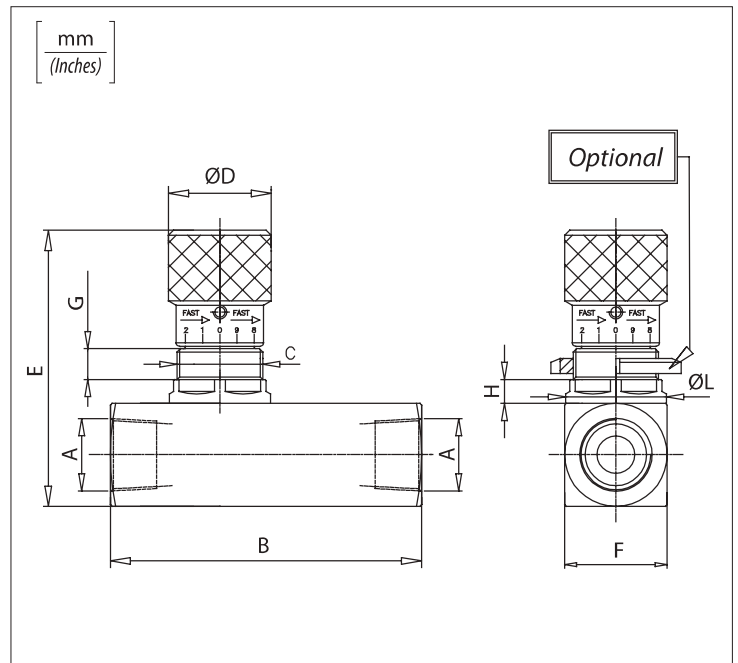
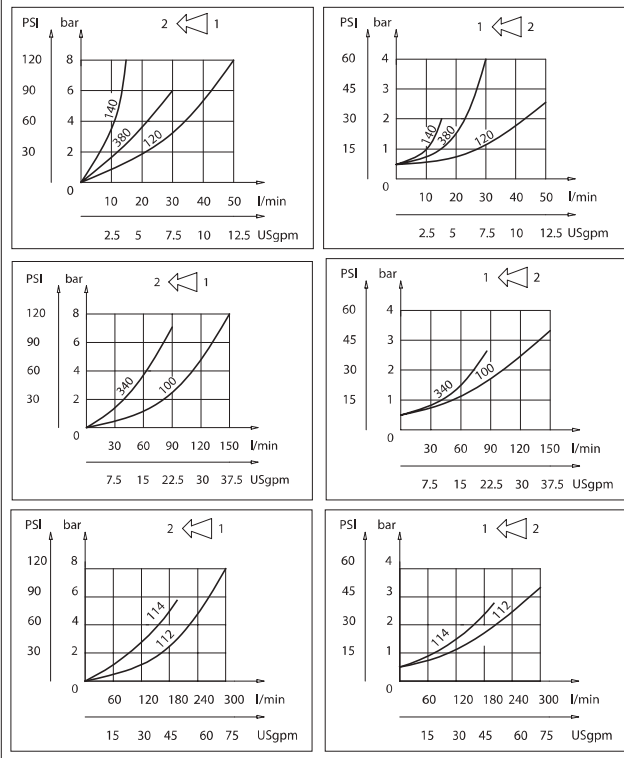
Olio idraulico Mineral oil	ISO 6743/4 DIN 51524	
Viscosità fluido Fluid viscosity	10-500 mm ² /s 45 to 2000 ssu (6 to 420 cSt)	
Classe di contaminazione max con filtro Max contamination index with filter	ISO 4406:1999 Classe 19/17/14	
Temperatura del fluido Fluid temperature	-20°C -4°F	+80°C +176°F
Temperatura ambiente Ambient temperature	-20°C -4°F	+50°C +122°F



È indispensabile l'utilizzo di un filtro (filtrazione consigliata 15 micron) per proteggere la valvola

It is necessary a filter use to protect the valve (advised filtration 15 micron)

Perdite di carico Pressure drops



Caratteristiche tecniche / Technical performances

Codice Code	A	Portata max Max Flow l/min-USgpm	Pressione Max Max pressure bar/PSI	B	C	D	E	F	G	H	L	Optional Code	Peso approssimativo Approx weight Kg / lb
STUF180NPT	NPTF 1/8	10 (2.5)	400 (5800)	58 (2.28)	M15x1	20 (0.79)	60,5 (2.38)	20 (0.79)	8 (0.31)	5,5 (0.21)	19,5 (0.76)	84100031	0,31 (0.7)
STUF140NPT	NPTF 1/4	15 (4)		66 (2.60)	M20x1	30 (1.18)	75 (2.95)	25 (0.98)	7,5 (0.29)	6 (0.23)	24,5 (0.96)	84100022	0,40 (0.88)
STUF380NPT	NPTF 3/8	30 (8)		77 (3.03)	M25x1,5	33 (1.30)	81 (3.19)	30 (1.18)	9 (0.35)	7 (0.27)	29,5 (1.16)	84100023	0,63 (1.40)
STUF120NPT	NPTF 1/2	50 (13)		91 (3.58)	M35x1,5	42 (1.65)	110 (4.33)	40 (1.57)	15,5 (0.61)	8 (0.31)	39,5 (1.55)	84100024	1,5 (3.3)
STUF340NPT	NPTF 3/4	80 (21)		112,5 (4.43)	M45x1,5	53 (2.08)	137 (5.39)	55 (2.16)	13,5 (0.53)	10 (0.39)	50 (1.96)	84100030	3,2 (7)
STUF100NPT	NPTF 1	150 (40)		141 (5.55)	168 (6.61)		147 (5.78)	65 (2.55)					4,7 (10.3)
STUF114NPT	NPTF 1-1/4	200 (50)	350 (5000)	155 (6.10)		137 (5.39)	55 (2.16)	13,5 (0.53)	10 (0.39)	50 (1.96)	84100030	3,2 (7)	
STUF112NPT	NPTF 1-1/2	300 (80)		168 (6.61)		147 (5.78)	65 (2.55)					4,7 (10.3)	

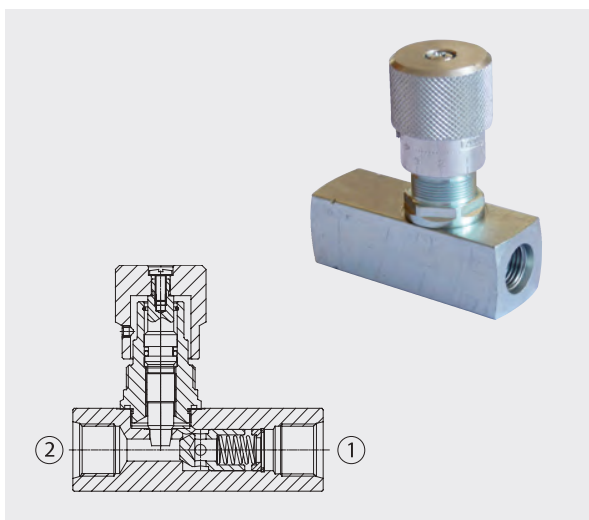
Codice
ordinazione
Ordering
code

STUF - X
NPT

X	Dim / Size
180	NPTF 1/8
140	NPTF 1/4
380	NPTF 3/8
120	NPTF 1/2
340	NPTF 3/4
100	NPTF 1
114	NPTF 1-1/4
112	NPTF 1-1/2

STUF-SAE Valvole di controllo flusso unidirezionali

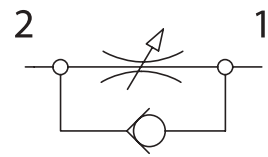
Unidirectional flow control valves



Dati tecnici

Technical data

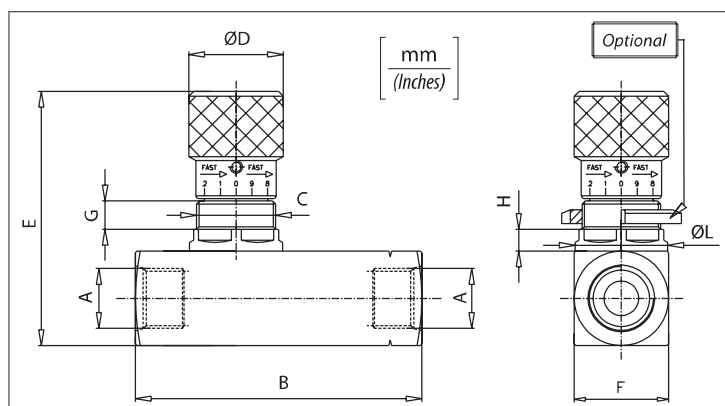
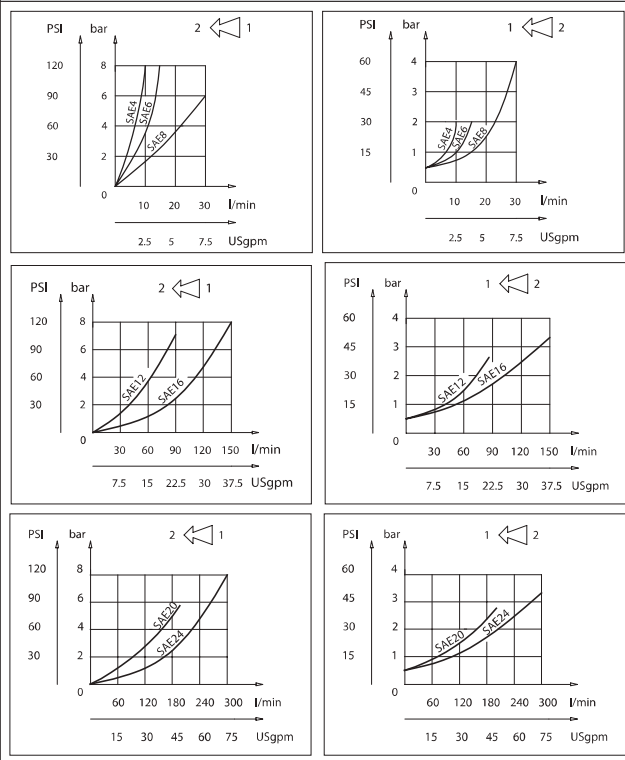
Olío idraulico Mineral oil	ISO 6743/4 DIN 51524	
Viscosità fluido Fluid viscosity	10-500 mm ² /s 45 to 2000 ssu (6 to 420 cSt)	
Classe di contaminazione max con filtro Max contamination index with filter	ISO 4406:1999 Classe 19/17/14	
Temperatura del fluido Fluid temperature	-20°C -4°F	+80°C +176°F
Temperatura ambiente Ambient temperature	-20°C -4°F	+50°C +122°F



È indispensabile l'utilizzo di un filtro (filtrazione consigliata 15 micron) per proteggere la valvola

It is necessary a filter use to protect the valve (advised filtration 15 micron)

Perdite di carico Pressure drops



Codice ordinazione / Ordering code

STUF - X SAE

X	4	6	8	12	16	20	24
Dim Size	7/16 20UNF	9/16 18UNF	3/4 16UNF	1-1/16 12UN	1-5/16 12UN	1-5/8 12UN	1-7/8 12UN

Caratteristiche tecniche / Technical performances

Codice Code	A	Portata max Max Flow l/min-USgpm	Pressione Max Max pressure bar/PSI	B	C	D	E	F	G	H	L	Optional Code	Peso approssimativo Approx weight Kg / lb
STUF4SAE	7/16 - 20UNF	15 (4)	400 (5800)	66 (2.60)	M20x1	30 (1.18)	75 (2.95)	25 (0.98)	7,5 (0.29)	6 (0.23)	24,5 (0.96)	84100022	0,41 (0.90)
STUF6SAE	9/16 - 18UNF	30 (8)		70,5 (2.78)									0,42 (0.93)
STUF8SAE	3/4 - 16UNF	50 (13)		91 (3.58)	M25x1,5	33 (1.30)	81 (3.19)	30 (1.18)	9 (0.35)	7 (0.27)	29,5 (1.16)	84100023	0,63 (1.40)
STUF12SAE	1-1/16 - 12UN	80 (21)		112,5 (4.43)	M35x1,5	42 (1.65)	110 (4.33)	40 (1.57)	15,5 (0.61)	8 (0.31)	39,5 (1.55)	84100024	1,40 (3.10)
STUF16SAE	1-5/16 - 12UN	150 (40)	141 (5.55)	115 (4.53)									45 (1.77)
STUF20SAE	1-5/8 - 12UN	200 (50)	350 (5000)	155 (6.10)	M45x1,5	53 (2.08)	137 (5.39)	55 (2.16)	13,5 (0.53)	10 (0.39)	50 (1.96)	84100030	3,3 (7.25)
STUF24SAE	1-7/8 - 12UN	300 (80)		168 (6.61)									147 (5.78)