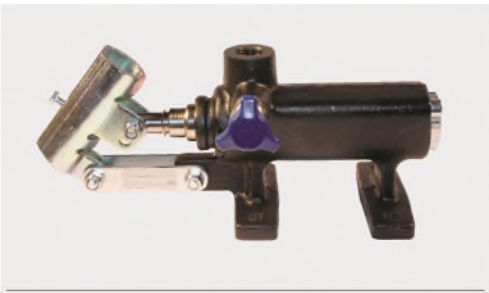




# PM70 Pompa a mano semplice effetto *Single acting hand pump*

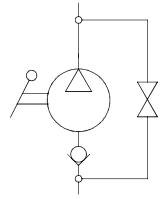


La pompa viene fornita con leva di azionamento L=600 mm  
*The pump is supplied with acting lever 23 in. long*

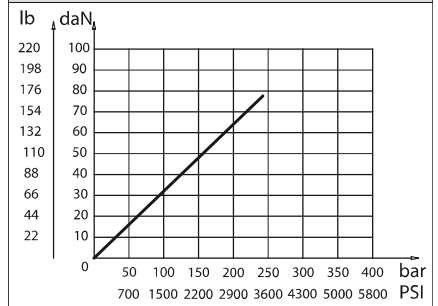
### Dati tecnici *Technical data*

Olio idraulico <i>Mineral oil</i>	ISO 6743/4 DIN 51524
Viscosità fluido <i>Fluid viscosity</i>	10-500 mm <sup>2</sup> /s 45 to 2000 ssu (6 to 420 cSt)
Classe di contaminazione max con filtro <i>Max contamination index with filter</i>	ISO 4406:1999 Classe 19/17/14
Temperatura del fluido <i>Fluid temperature</i>	-20°C +80°C -4°F +176°F
Temperatura ambiente <i>Ambient temperature</i>	-20°C +50°C -4°F +122°F

È indispensabile l'utilizzo di un filtro (filtrazione consigliata 15 micron) per proteggere la valvola  
*It is necessary a filter use to protect the valve (advised filtration 15 micron)*



### Sforzo esercitato all'estremità della leva *Effort operating on the end of the lever*



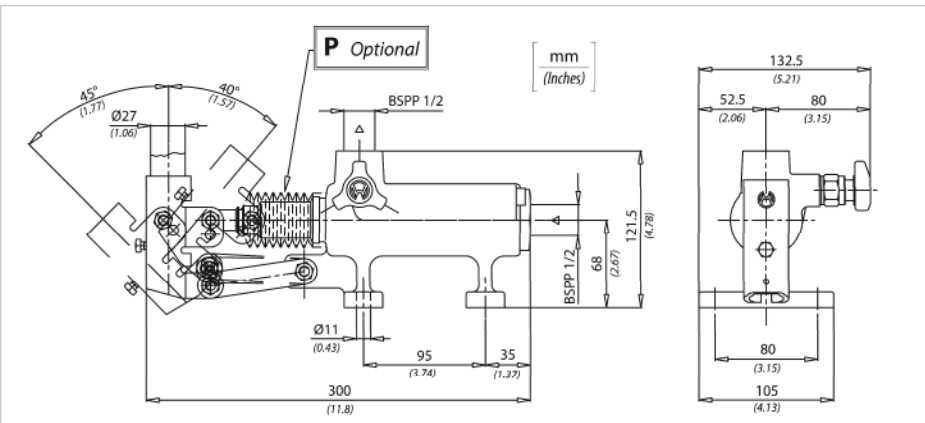
### Caratteristiche tecniche / *Technical performances*

Codice <i>Code</i>	Pressione Max <i>Max pressure bar/PSI</i>	Peso approssimativo <i>Approx weight Kg / lb</i>	Cilindrata <i>Displacement cm<sup>3</sup> / in<sup>3</sup></i>
PM70	230 (3300)	6 (13.2)	70 (4.27)

### Codice ordinazione / *Ordering code*

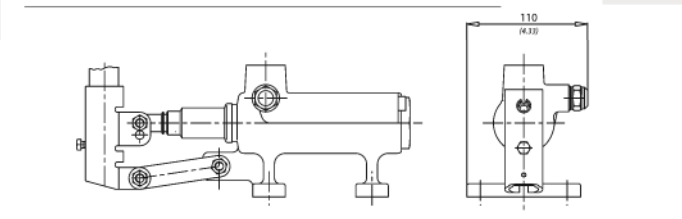
## PM70 - X

X	Optional
P	Soffietto / <i>With rubber protection</i>
WRV	Senza rubinetto di scarico con valvola di massima / <i>Without unloading valve with relief valve</i>
W	Senza rubinetto di scarico / <i>Without unloading valve</i>
J	Con joystick / <i>With joystick</i>
L	Con leva di scarico / <i>With unloading lever</i>
RRV	Con rubinetto di scarico e valvola di massima / <i>With drain valve and relief valve</i>

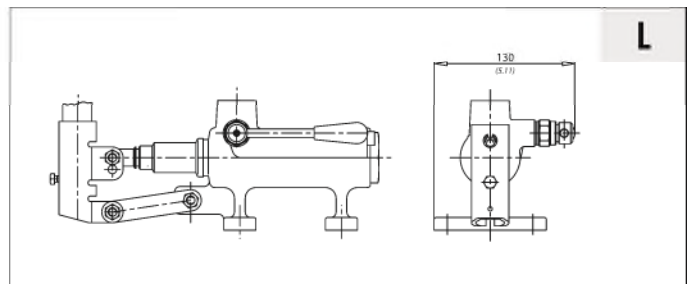


Valvola di massima *Moila 40/350 bar* Taratura Standard 100 bar  
*(Relief valve) Spring 580/5075 PSI (Standard Setting) 1500 psi*

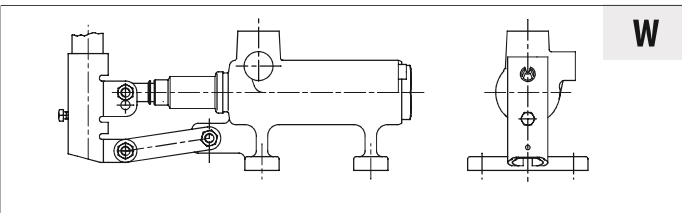
### WRV



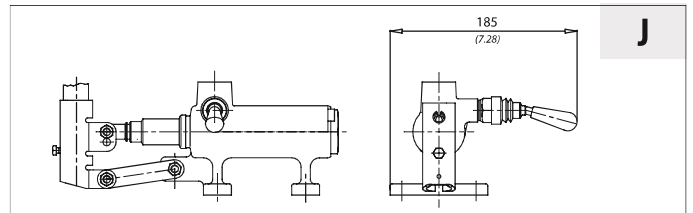
### L



### W



### J



### RRV

