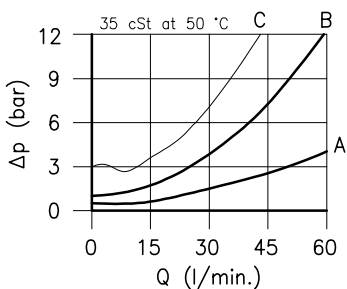
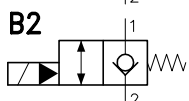
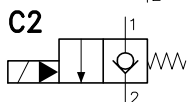
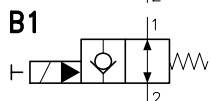
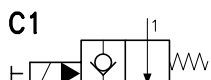


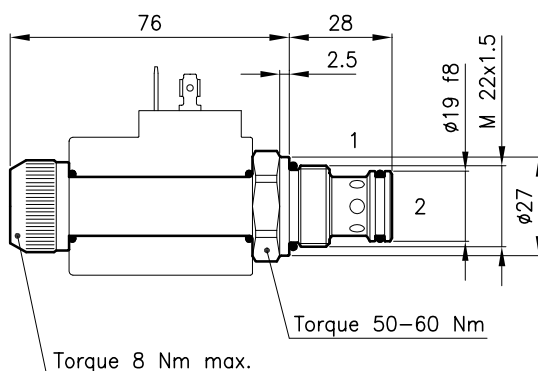
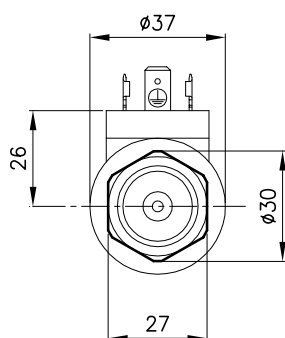
Technical features



	22C1	22B1	22C2	22B2
1 → 2 De-en.	curve A	curve A	not allowed	not allowed
2 → 1 De-en.	not allowed	curve A	curve B	curve B
1 → 2 Energ.	not allowed	not allowed	curve A	curve A
2 → 1 Energ.	curve C	curve C	not allowed	curve A

Cavity	(For dimensions see catalogue 17.000)	S 30/2
Max. flow	(l/min.)	60
Max. pressure	(bar)	350
Response time	(ms)	80 - 120
It change in function of circuit, pressure, flow and fluid viscosity. (Mean value)		
Fluid viscosity range	(cSt)	2.8 - 380
Fluid temperature range	(°C)	-20 +80
Mass	(kg)	0.210
Hydraulic fluid; mineral oil HM and HV ISO 6074		
Recommended filtration; 19/15 ISO 4466 (25 μ absolutes)		
Standard seals in Polyurethane and Buna N		

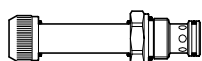
Dimensions



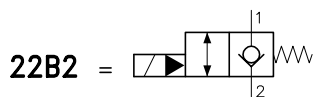
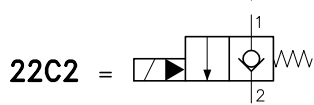
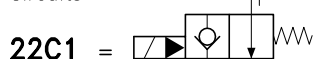
Ordering informations

EPP 30/22C1-MO

EPP 30/22.. = Valve type



Circuits



MO = Manual override (Only C1 and B1 version)
(Omit if not request)

Codes:

EPP 30/22C1	35 011 110
EPP 30/22C1-MO	35 011 109
EPP 30/22B1	35 011 108
EPP 30/22B1-MO	35 011 107
EPP 30/22C2	35 011 115
EPP 30/22B2	35 011 114
External seals kit	90 620 103

EPP 30/22.. valves can be assembled on standard bodies 30-L0 series; for dimensions see catalogue 16.010

On the EPP 30 valves must be assembled the Coils B30 series; for dimensions, features and codes see catalogues 09.900 and 09.901.