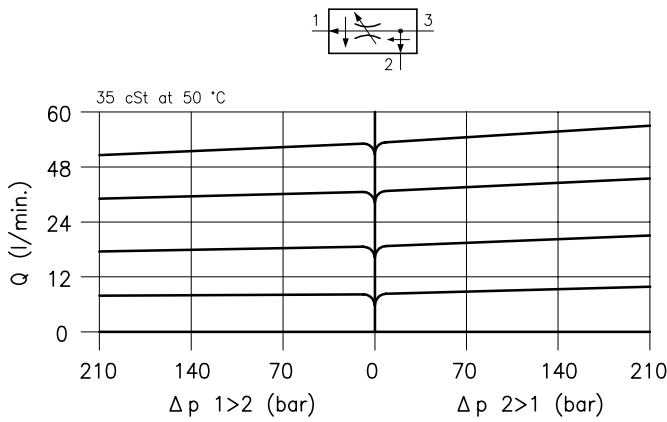
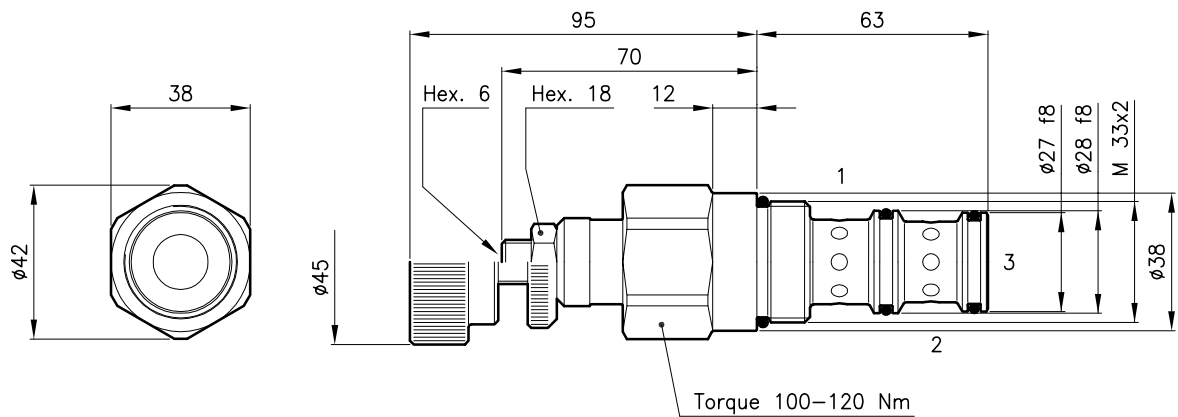


**Technical features**



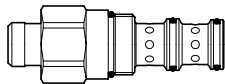
Cavity (For dimensions see catalogue 17.000)	S 50/3	
Max. inlet flow (l/min.)	120	
Flow setting range $\pm 10\%$ (l/min.)	type U	4 - 8
	type D	8 - 16
	type T	16 - 30
	type Q	30 - 60
Max. pressure (bar)	315	
Fluid viscosity range (cSt)	2.8 - 380	
Fluid temperature range (°C)	-20 +80	
Mass (Standard adjustment type N) (kg)	0.580	
Hydraulic fluid; mineral oil HM and HV	ISO 6074	
Recommended filtration; 19/15 ISO 4466 (25 $\mu$ absolutes)		
Standard seals in Polyurethane and Buna N		

**Dimensions**



**Ordering informations**

**DPC 50** = Valve type



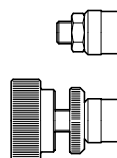
Flow setting range

- U** = 4 - 8 l/min
- D** = 8 - 16 l/min
- T** = 16 - 30 l/min
- Q** = 30 - 60 l/min

Adjustment type

- N** = Standard adjustment
- V** = Handknob adjustment

**DPC 50/D-N**



Codes:

DPC 50/U-N	53 011 100
DPC 50/D-N	53 011 101
DPC 50/T-N	53 011 102
DPC 50/Q-N	53 011 103
DPC 50/U-V	53 011 116
DPC 50/D-V	53 011 117
DPC 50/T-V	53 011 118
DPC 50/Q-V	53 011 119
External seals kit	90 620 107

DPC 50 valves can be assembled on standard bodies 50-C3 series; for dimensions see catalogue 16.010