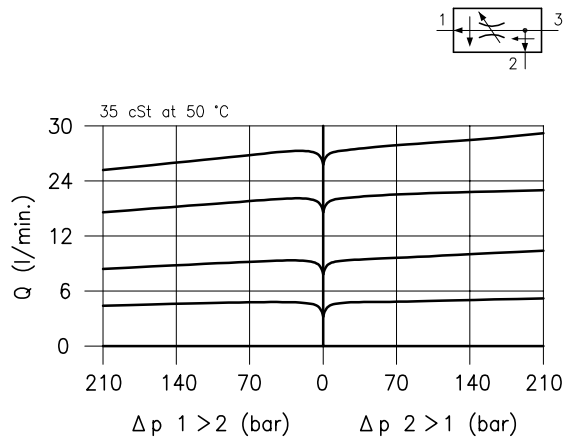
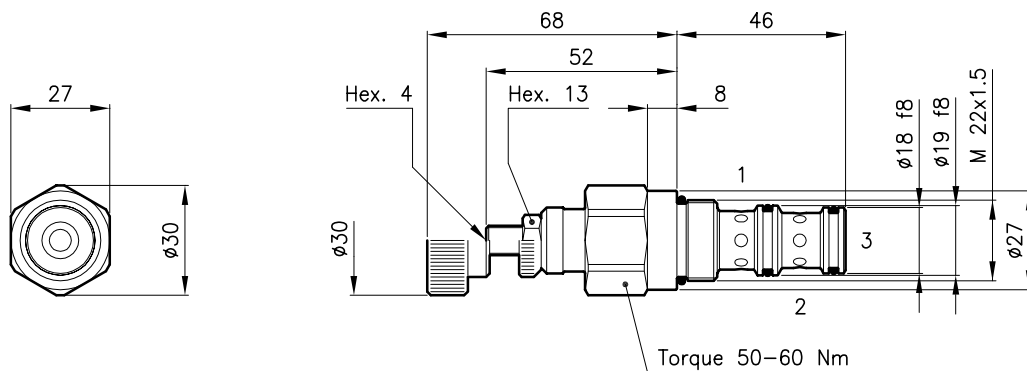


Technical features



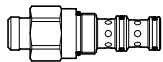
Cavity	(For dimensions see catalogue 17.000)	S 30/3
Max. inlet flow	(l/min.)	60
Flow setting range ± 10% (l/min.)	type U	3 – 6
	type D	6 – 11
	type T	13 – 25
	type Q	25 – 45
Max. pressure	(bar)	315
Fluid viscosity range	(cSt)	2.8 – 380
Fluid temperature range	(°C)	-20 +80
Mass (Standard adjustment type N)	(kg)	0.200
Hydraulic fluid; mineral oil HM and HV	ISO 6074	
Recommended filtration; 19/15 ISO 4466 (25 μ absolutes)		
Standard seals in Polyurethane and Buna N		

Dimensions



Ordering informations

DPC 30 = Valve type



Flow setting range

U = 3 – 6 l/min

D = 6 – 11 l/min

T = 13 – 25 l/min

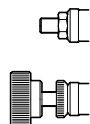
Q = 25 – 45 l/min

Adjustment type

N = Standard adjustment

V = Handknob adjustment

DPC 30/D-N



Codes:

DPC 30/U-N 33 011 109

DPC 30/D-N 33 011 110

DPC 30/T-N 33 011 111

DPC 30/Q-N 33 011 112

DPC 30/U-V 33 011 105

DPC 30/D-V 33 011 106

DPC 30/T-V 33 011 107

DPC 30/Q-V 33 011 108

External seals kit 90 620 104

DPC 30 valves can be assembled on standard bodies 30-C3 series; for dimensions see catalogue 16.010