

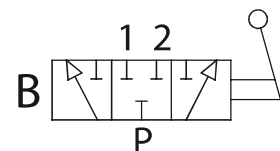
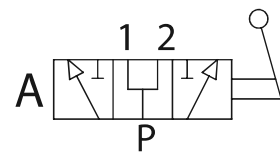
DDFA3

Deviatori di flusso a 3 vie alta pressione High pressure 3 ways flow diverters

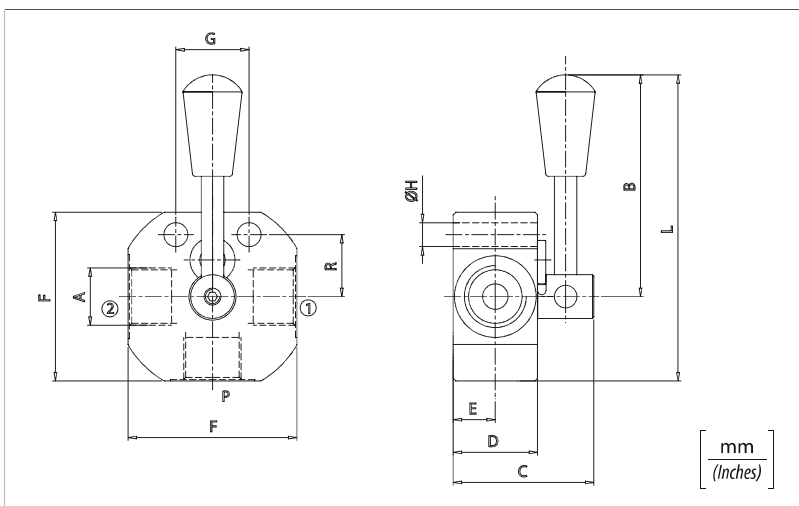


Dati tecnici Technical data

Olio idraulico <i>Mineral oil</i>	ISO 6743/4 <i>DIN 51524</i>
Viscosità fluido <i>Fluid viscosity</i>	10-500 mm ² /s 45 to 2000 ssu (6 to 420 cSt)
Classe di contaminazione max con filtro <i>Max contamination index with filter</i>	ISO 4406:1999 Classe 19/17/14
Temperatura del fluido <i>Fluid temperature</i>	-20°C +80°C -4°F + 176°F
Temperatura ambiente <i>Ambient temperature</i>	-20°C +50°C -4°F + 122°F



È indispensabile l'utilizzo di un filtro (filtrazione consigliata 15 micron) per proteggere la valvola
It is necessary a filter use to protect the valve (advised filtration 15 micron)

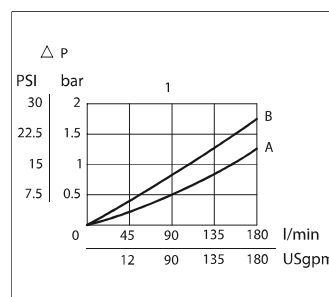
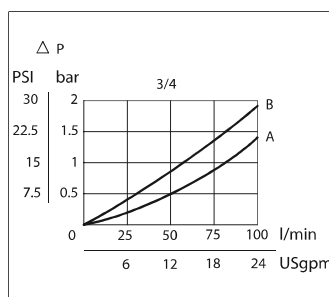
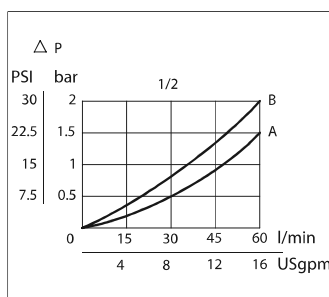
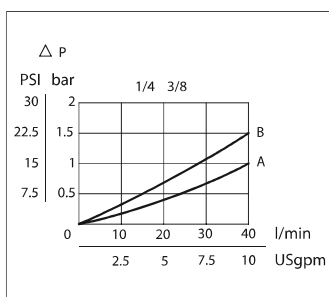


Codice ordinazione / Ordering code

DDFA3 - X - Y - S

X	Dimensione / Size	Y	Schema / Circuit
140	BSPP 1/4	A	Centro aperto Open centre
380	BSPP 3/8		
120	BSPP 1/2		
340	BSPP 3/4	B	Centro chiuso Closed centre
100	BSPP 1		

Perdite di carico / Pressure drops



Caratteristiche tecniche / Technical performances

Codice Code	A	Portata Max Max flow l/min - USgpm	Pressione Max Max pressure bar/PSI	B	C	D	E	F	G	H	L	R	Peso approssimativo Approx weight Kg/lb
DDFA3140	BSPP 1/4	40 (10)	500 (7250)	80 (3.15)	50 (1.97)	30 (1.18)	15 (0.59)	60 (2.36)	26 (1.02)	8,5 (0.33)	110 (4.33)	22 (0.87)	0,75 (1.65)
DDFA3380	BSPP 3/8												
DDFA3120	BSPP 1/2												
DDFA3340	BSPP 3/4												
DDFA3100	BSPP 1	180 (47)		102 (4.01)	67 (2.64)	45 (1.77)	22,5 (0.88)	85 (3.47)	32 (1.26)	11 (0.43)	142 (4.60) 145 (5.71)	26 (1.02) 31,5 (1.24)	1,8 (4)