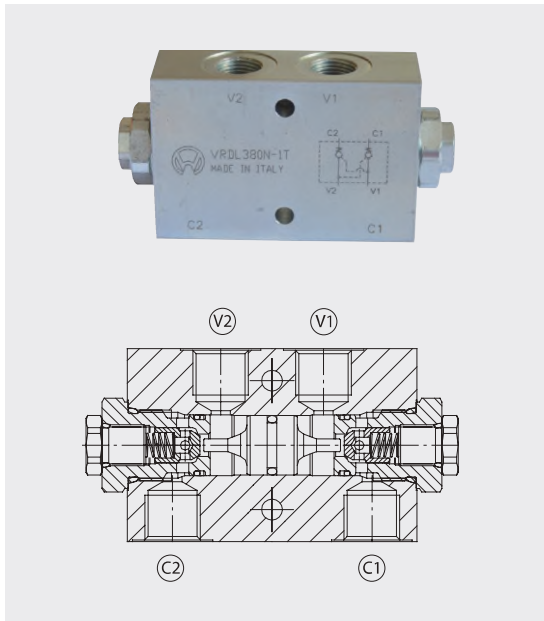




# VRDL

## Valvole di blocco pilotate a doppio effetto

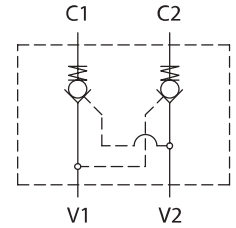
### Double acting pilot check valves



#### Dati tecnici

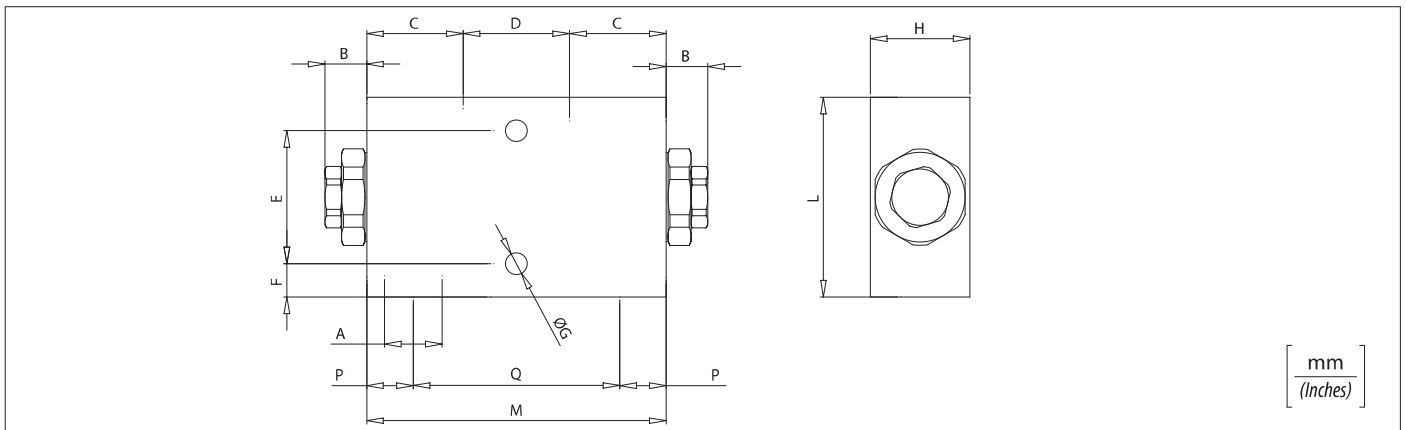
#### Technical data

Olío idraulico <i>Mineral oil</i>	ISO 6743/4 DIN 51524	
Viscosità fluido <i>Fluid viscosity</i>	10-500 mm <sup>2</sup> /s 45 to 2000 ssu (6 to 420 cSt)	
Classe di contaminazione max con filtro <i>Max contamination index with filter</i>	ISO 4406:1999 Classe 19/17/14	
Temperatura del fluido <i>Fluid temperature</i>	-20°C -4°F	+80°C +176°F
Temperatura ambiente <i>Ambient temperature</i>	-20°C -4°F	+50°C +122°F

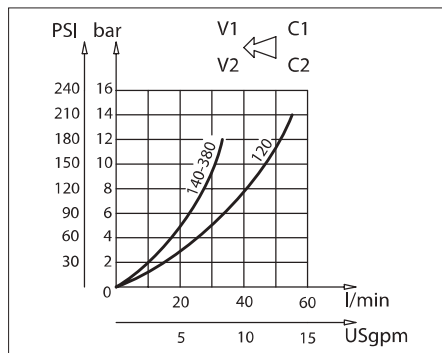
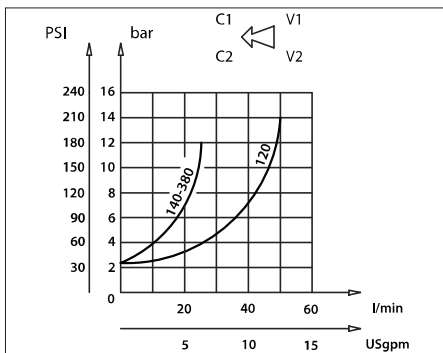


È indispensabile l'utilizzo di un filtro (filtrazione consigliata 15 micron) per proteggere la valvola

*It is necessary a filter use to protect the valve (advised filtration 15 micron)*



#### Perdite di carico Pressure drops



#### Codice ordinazione / Ordering code

### VRDL - X

**X**

Dimensione / Size

140N

BSPP 1/4

380N

BSPP 3/8

120N

BSPP 1/2

#### Caratteristiche tecniche / Technical performances

Codice Code	A	Portata max Max Flow l/min-USgpm	Pressione Max Max pressure bar/PSI	B	C	D	E	F	G	H	L	M	P	Q	Peso approssimativo Approx weight Kg / lb	Rapporto di pilotaggio Pilot ratio
VRDL140N	BSPP 1/4	35 (9)	350 (5000)	12,5 (0.49)	29 (1.14)	32 (1.25)	40 (1.57)	10 (0.39)	6,5 (0.25)	30 (1.18)	60 (2.36)	90 (3.54)	14 (0.55)	62 (2.44)	1,2 (2.6)	1:7
VRDL380N	BSPP 3/8															
VRDL120N	BSPP 1/2	50 (13)		14,5 (0.57)	38 (1.49)	34 (1.33)		15 (0.59)	8,5 (0.33)	35 (1.37)	70 (2.75)	110 (4.33)	20,5 (0.80)	69 (2.71)	1,9 (4.2)	